

SIX SENSES
RESIDENCES
DUBAI MARINA

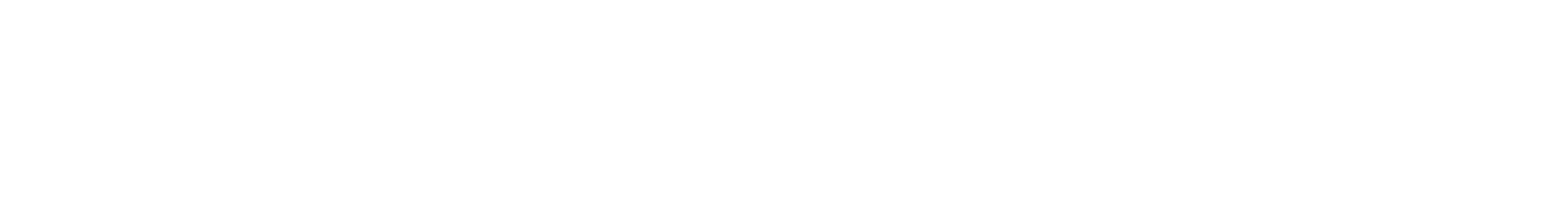
A development by

SELECT
GROUP



PAYMENT PLAN

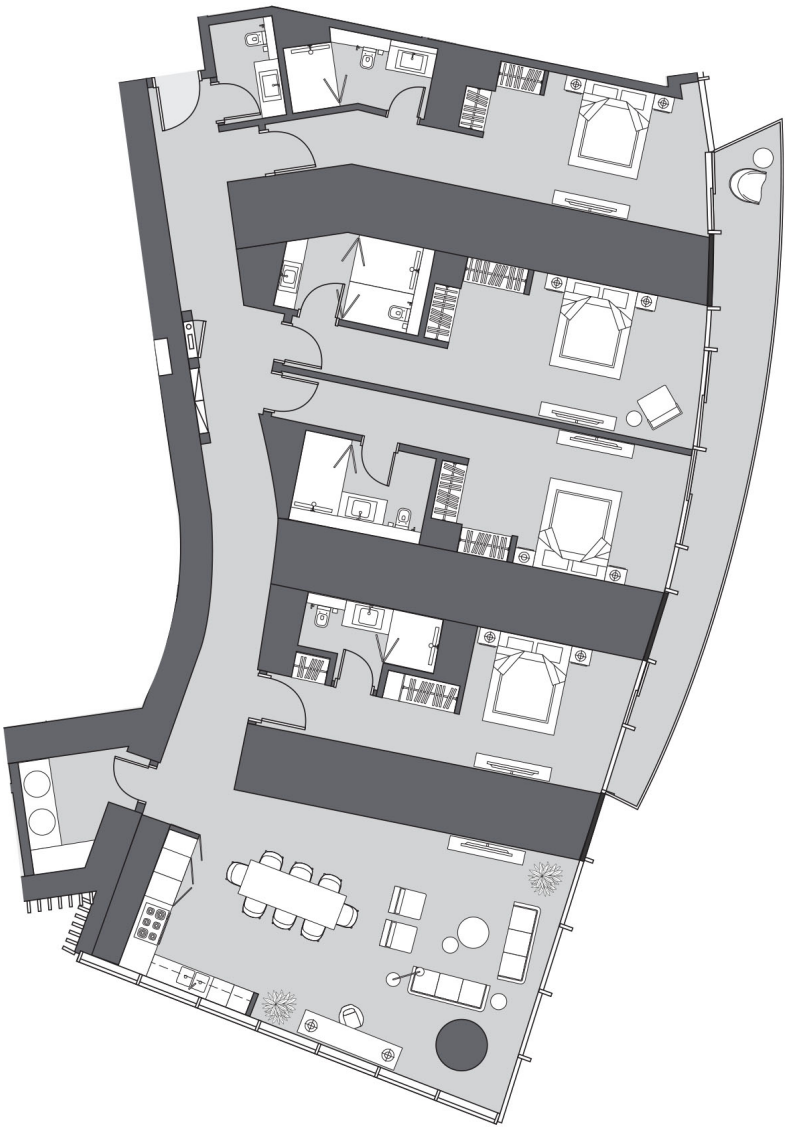
INSTALLMENT	MILESTONE	PAYMENT
1	Upon Reservation	AED 100K
2	Registration within 14 days of reservation	Balance of 20%
3	Within 6 months of reservation	10%
4	Within 12 months of reservation	10%
4	Upon completion	60%



UNIT	VIEW	BEDROOMS	TYPE	UNIT AREA	INTERNAL AREA	EXTERNAL AREA	LIST PRICE (AED)	FURNISHED
SSM-1104	Sheikh zayed	4	A	3,317.65	3,082.46	235.19	8,677,000.00	No
SSM-1204	Sheikh zayed	4	A	3,317.65	3,082.46	235.19	8,761,000.00	No
SSM-1704	Sheikh zayed	4	A	3,317.65	3,082.46	235.19	9,579,000.00	No
SSM-1804	Sheikh zayed	4	A	3,317.65	3,082.46	235.19	9,663,000.00	No
SSM-1904	Sheikh zayed	4	A	3,317.65	3,082.46	235.19	9,748,000.00	No
SSM-2004	Sheikh zayed	4	A	3,317.65	3,082.46	235.19	9,831,000.00	No
SSM-2104	Sheikh zayed	4	A	3,317.65	3,082.46	235.19	9,916,000.00	No
SSM-2504	Golf Club view	4	A1	3,325.94	3,087.52	238.42	10,122,000.00	No
SSM-2704	Golf Club view	4	A1	3,325.94	3,087.52	238.42	10,323,000.00	No
SSM-2904	Golf Club view	4	A1	3,325.94	3,087.52	238.42	10,524,000.00	No
SSM-3004	Golf Club view	4	A1	3,325.94	3,087.52	238.42	10,623,000.00	No
SSM-3404	Golf Club view	4	A1	3,325.94	3,087.52	238.42	11,025,000.00	No
SSM-3504	Golf Club view	4	A1	3,325.94	3,087.52	238.42	11,125,000.00	No
SSM-3604	Golf Club view	4	A1	3,325.94	3,087.52	238.42	11,225,000.00	No
SSM-3704	Golf Club view	4	A1	3,325.94	3,087.52	238.42	11,326,000.00	No
SSM-4501	South Partial Sea Marina Skyline and Golf Club View	4	B	5,208.65	4,584.67	623.98	15,098,000.00	No
SSM-5001	South Partial Sea Marina Skyline and Golf Club View	4	B	5,208.65	4,584.67	623.98	15,733,000.00	No
SSM-6101	South Partial Sea Marina Skyline and Golf Club View	4	B	5,208.65	4,584.67	623.98	17,131,000.00	No
SSM-4102	North Partial Sea City and Golf View	4	C	5,773.65	5,154.94	618.71	16,316,000.00	No
SSM-4302	North Partial Sea City and Golf View	4	C	5,773.65	5,154.94	618.71	16,598,000.00	No
SSM-4402	North Partial Sea City and Golf View	4	C	5,773.65	5,154.94	618.71	16,739,000.00	No
SSM-4802	North Partial Sea Skyline and Golf Club View	4	C	5,773.65	5,154.94	618.71	17,227,000.00	No
SSM-5102	North Partial Sea Skyline and Golf Club View	4	C	5,773.65	5,154.94	618.71	17,651,000.00	No
SSM-6102	North Partial Sea Skyline and Golf Club View	4	C	5,773.65	5,154.94	618.71	19,063,000.00	No
SSM-10101	South Panoramic Palm Marina Blue Waters and Dubai Skyline View	4	D	5,208.76	4,584.67	624.09	24,798,000.00	No
SSM-6601	South Partial Sea Marina Skyline and Golf Club View	4	D	5,208.76	4,584.67	624.09	17,513,000.00	No
SSM-7201	South Panoramic Palm Marina Blue Waters and Dubai Skyline View	4	D	5,208.76	4,584.67	624.09	19,829,000.00	No
SSM-9101	South Panoramic Palm Marina Blue Waters and Dubai Skyline View	4	D	5,208.76	4,584.67	624.09	23,590,000.00	No
SSM-11101	South Panoramic Palm Marina Blue Waters and Dubai Skyline View	4	Duplex A	9,464.92	8,570.76	894.16	66,203,000.00	No
SSM-11302	North Panoramic Palm Blue Waters and Dubai Skyline View	4	Duplex B1	10,064.47	9,225.42	839.05	72,840,000.00	No
SSM-10102	North Panoramic Palm Blue Waters and Dubai Skyline View	4	E	5,712.94	5,094.34	618.60	27,895,000.00	No
SSM-6502	North Partial Sea Skyline and Golf Club View	4	E	5,712.94	5,094.34	618.60	19,136,000.00	No
SSM-7202	North Panoramic Palm and Dubai Sheikh Zayed Skyline View	4	E	5,712.94	5,094.34	618.60	21,882,000.00	No
SSM-8002	North Panoramic Palm Dubai Sheikh Zayed Skyline View	4	E	5,712.94	5,094.34	618.60	22,950,000.00	No
SSM-9102	North Panoramic Palm Blue Waters and Dubai Skyline View	4	E	5,712.94	5,094.34	618.60	26,559,000.00	No
SSM-11702	North Panoramic Palm Blue Waters and Dubai Skyline View	5	Triplex B	14,102.45	13,071.05	1,031.40	119,988,000.00	No

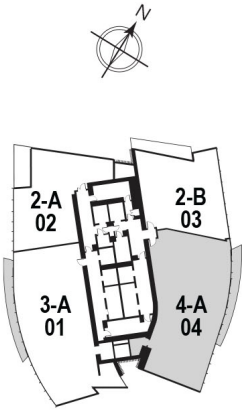
A

4 Bedrooms
Type A | Unit 04
Tier 1, Levels 07 - 21



GOLF / CITY URBAN

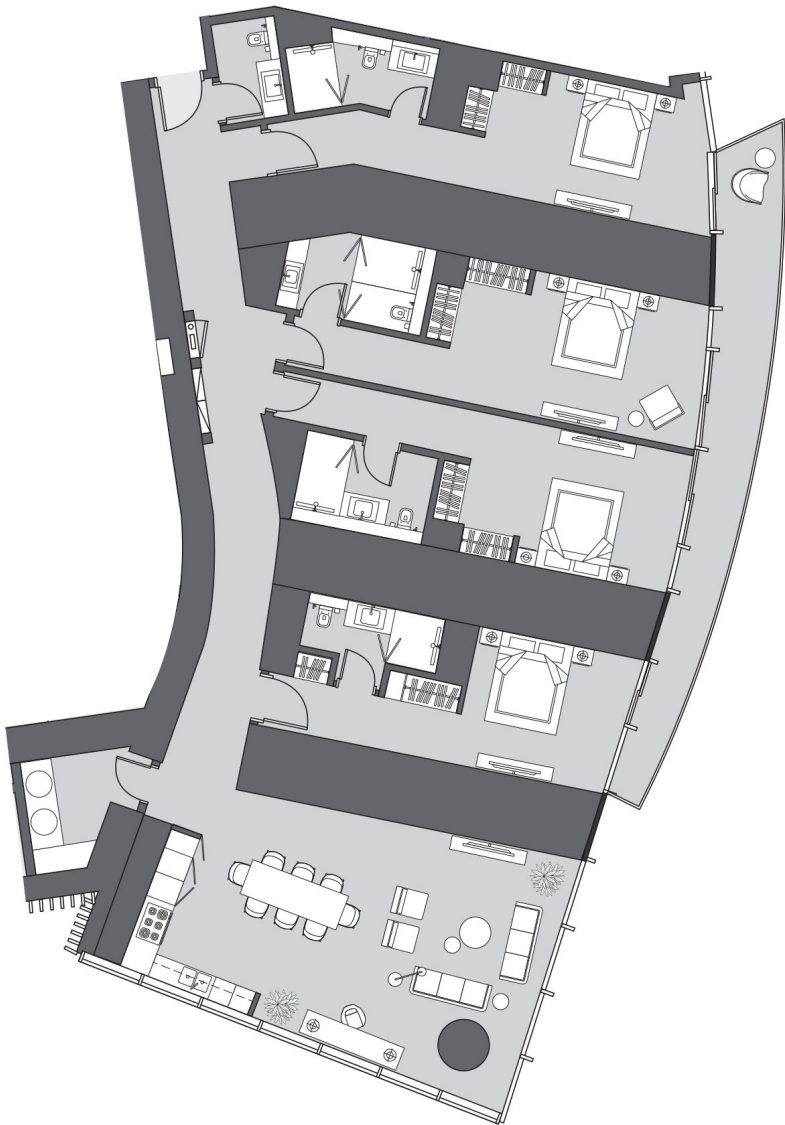
Apartment Area	286.37 m²	3,082.46 ƒ²
Balcony Area	21.85 m²	235.19 ƒ²
Total Area	308.22 m²	3,317.65 ƒ²



Drawings are provided by our consultants. All dimensions, features and amenities are approximate at time of printing. Actual size may vary from stated area. Drawings not to scale E & OE. The developer reserves the right to make revisions to the floor plans and any features, materials and dimensions mentioned without further notice.

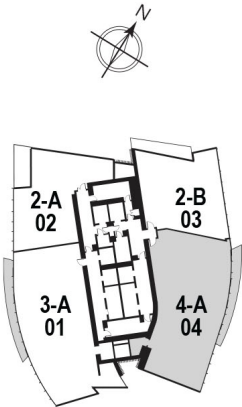
A

4 Bedrooms
Type A | Unit 04
Tier 1, Levels 07 - 21



GOLF / CITY URBAN

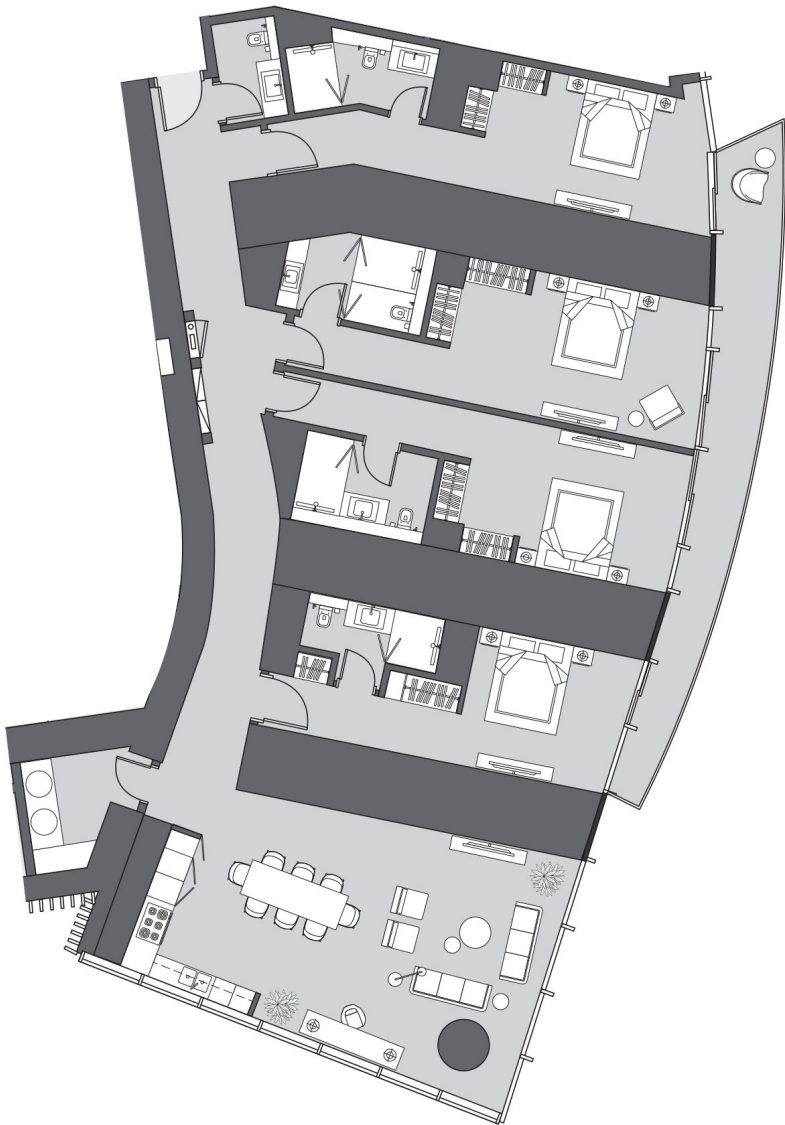
Apartment Area	286.37 m²	3,082.46 f²
Balcony Area	21.85 m²	235.19 f²
Total Area	308.22 m²	3,317.65 f²



Drawings are provided by our consultants. All dimensions, features and amenities are approximate at time of printing. Actual size may vary from stated area. Drawings not to scale E & OE. The developer reserves the right to make revisions to the floor plans and any features, materials and dimensions mentioned without further notice.

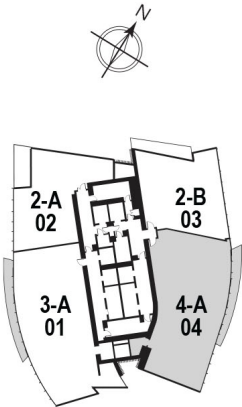
A

4 Bedrooms
Type A | Unit 04
Tier 1, Levels 07 - 21



GOLF / CITY URBAN

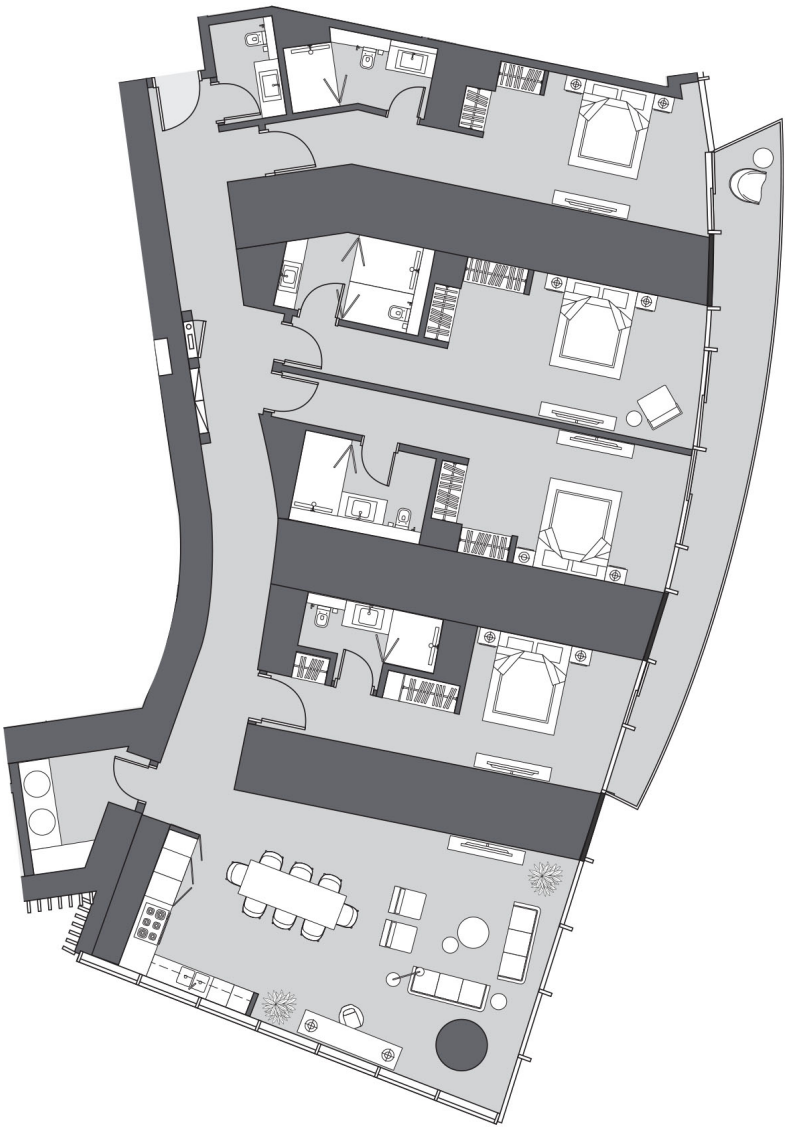
Apartment Area	286.37 m²	3,082.46 ʹ²
Balcony Area	21.85 m²	235.19 ʹ²
Total Area	308.22 m²	3,317.65 ʹ²



Drawings are provided by our consultants. All dimensions, features and amenities are approximate at time of printing. Actual size may vary from stated area. Drawings not to scale E & OE. The developer reserves the right to make revisions to the floor plans and any features, materials and dimensions mentioned without further notice.

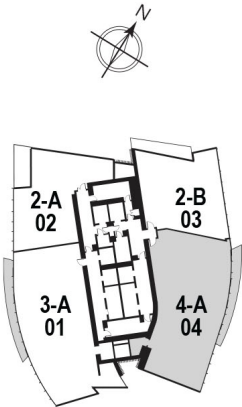
A

4 Bedrooms
Type A | Unit 04
Tier 1, Levels 07 - 21



GOLF / CITY URBAN

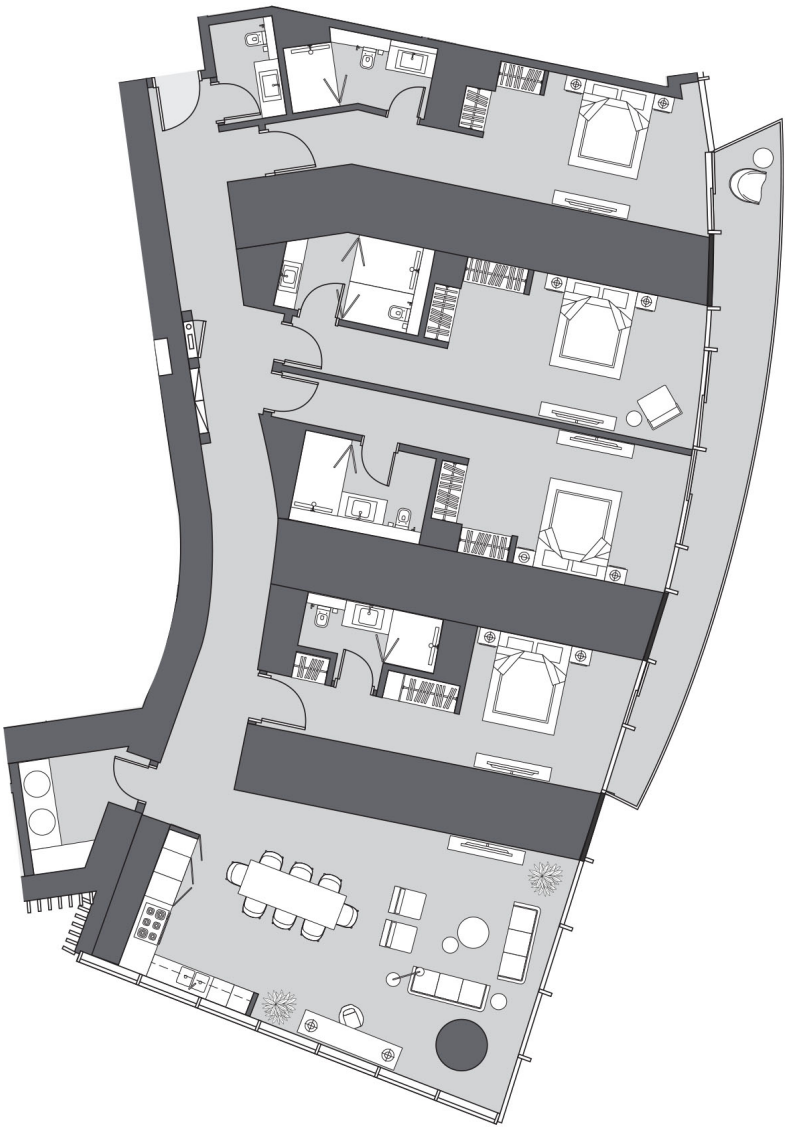
Apartment Area	286.37 m²	3,082.46 ƒ²
Balcony Area	21.85 m²	235.19 ƒ²
Total Area	308.22 m²	3,317.65 ƒ²



Drawings are provided by our consultants. All dimensions, features and amenities are approximate at time of printing. Actual size may vary from stated area. Drawings not to scale E & OE. The developer reserves the right to make revisions to the floor plans and any features, materials and dimensions mentioned without further notice.

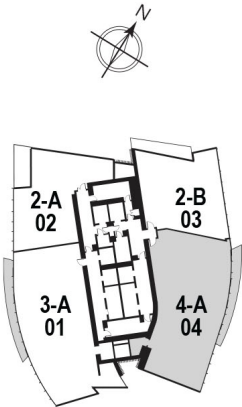
A

4 Bedrooms
Type A | Unit 04
Tier 1, Levels 07 - 21



GOLF / CITY URBAN

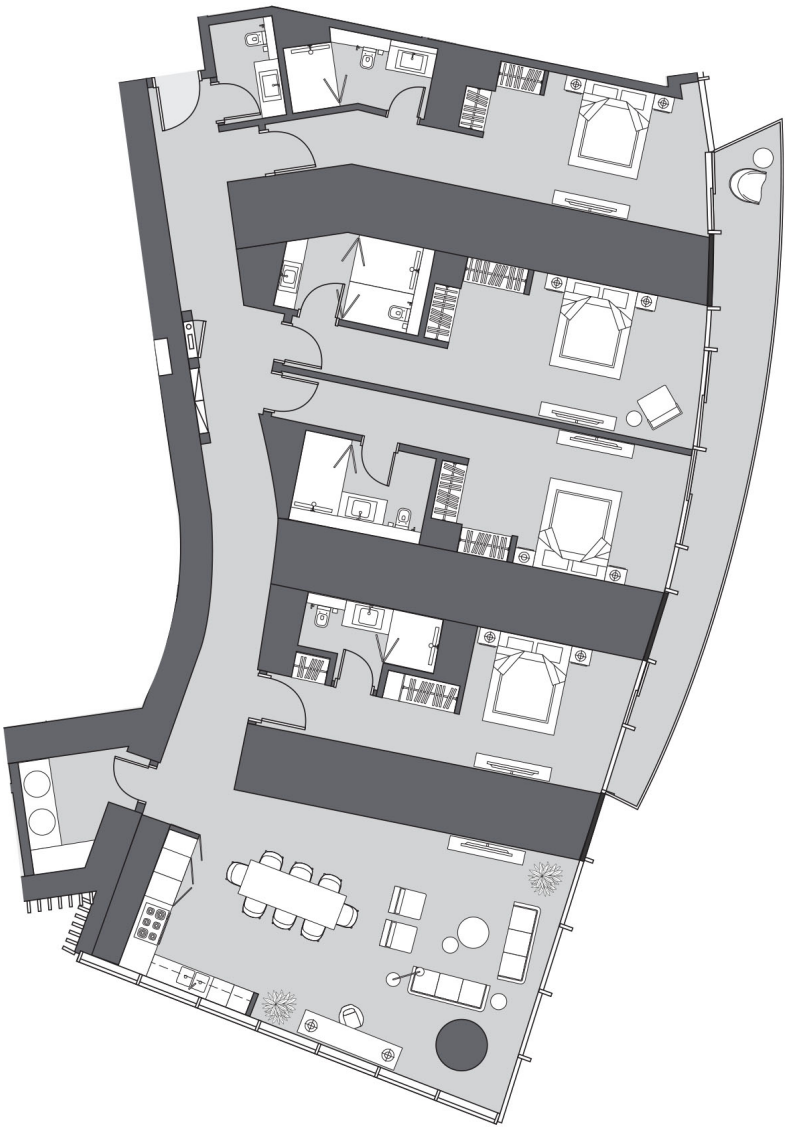
Apartment Area	286.37 m²	3,082.46 ƒ²
Balcony Area	21.85 m²	235.19 ƒ²
Total Area	308.22 m²	3,317.65 ƒ²



Drawings are provided by our consultants. All dimensions, features and amenities are approximate at time of printing. Actual size may vary from stated area. Drawings not to scale E & OE. The developer reserves the right to make revisions to the floor plans and any features, materials and dimensions mentioned without further notice.

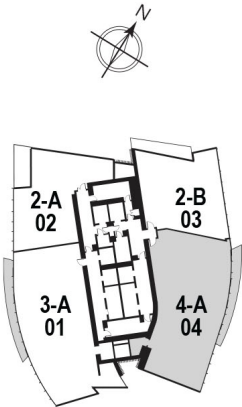
A

4 Bedrooms
Type A | Unit 04
Tier 1, Levels 07 - 21



GOLF / CITY URBAN

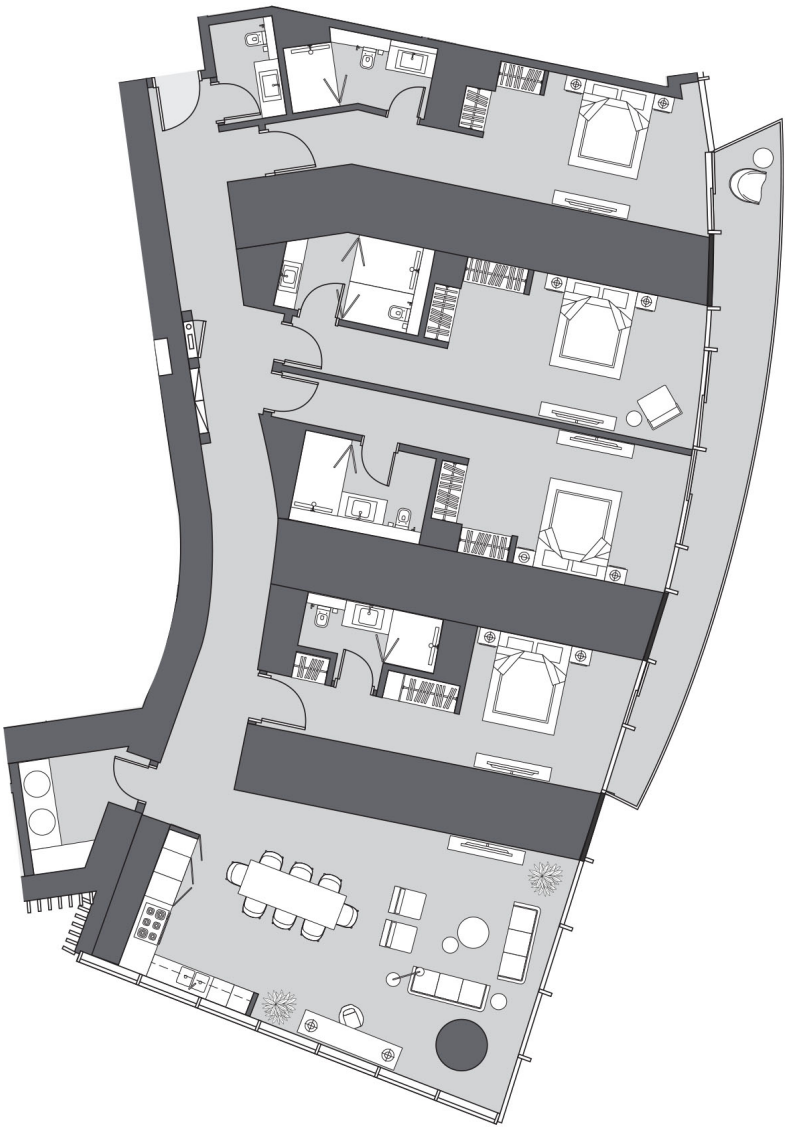
Apartment Area	286.37 m²	3,082.46 ʹ²
Balcony Area	21.85 m²	235.19 ʹ²
Total Area	308.22 m²	3,317.65 ʹ²



Drawings are provided by our consultants. All dimensions, features and amenities are approximate at time of printing. Actual size may vary from stated area. Drawings not to scale E & OE. The developer reserves the right to make revisions to the floor plans and any features, materials and dimensions mentioned without further notice.

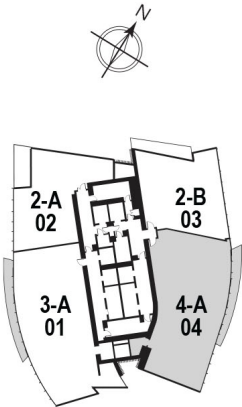
A

4 Bedrooms
Type A | Unit 04
Tier 1, Levels 07 - 21



GOLF / CITY URBAN

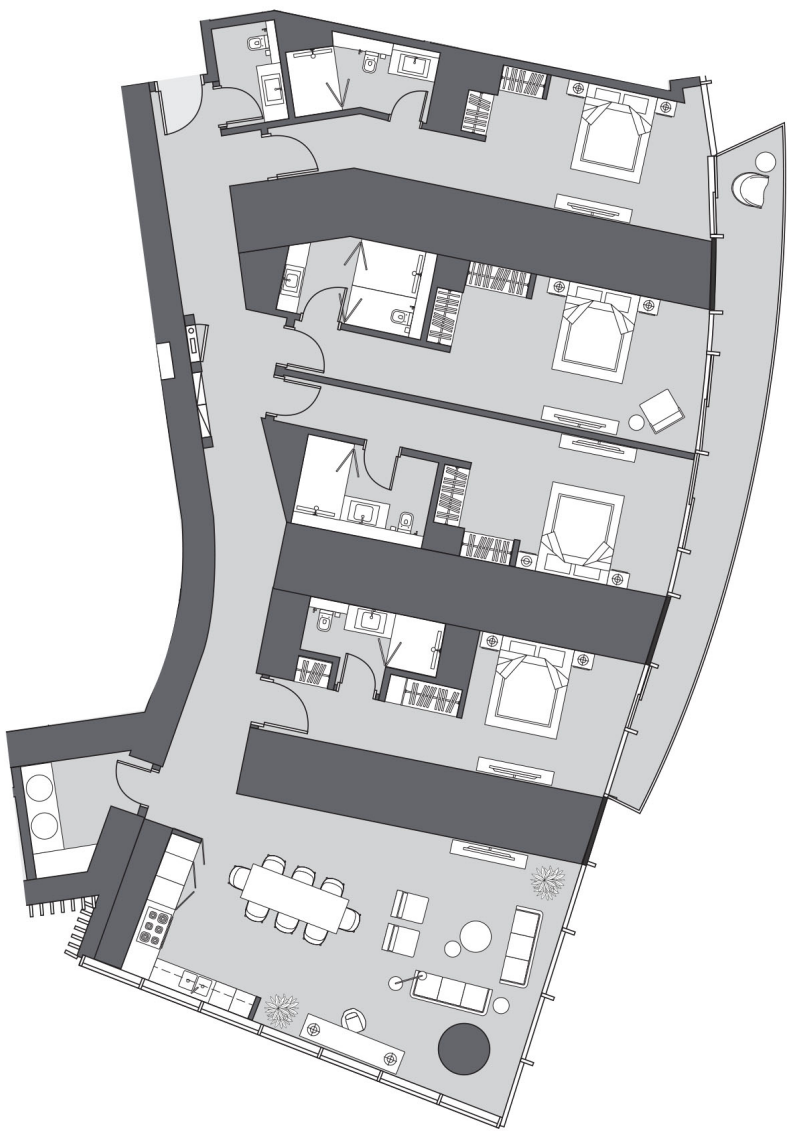
Apartment Area	286.37 m²	3,082.46 ƒ²
Balcony Area	21.85 m²	235.19 ƒ²
Total Area	308.22 m²	3,317.65 ƒ²



Drawings are provided by our consultants. All dimensions, features and amenities are approximate at time of printing. Actual size may vary from stated area. Drawings not to scale E & OE. The developer reserves the right to make revisions to the floor plans and any features, materials and dimensions mentioned without further notice.

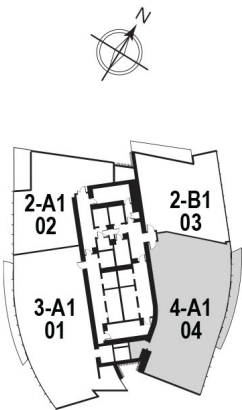
A1

4 Bedrooms
Type A1 | Unit 04
Tier 2, Levels 24 - 38



GOLF / CITY URBAN

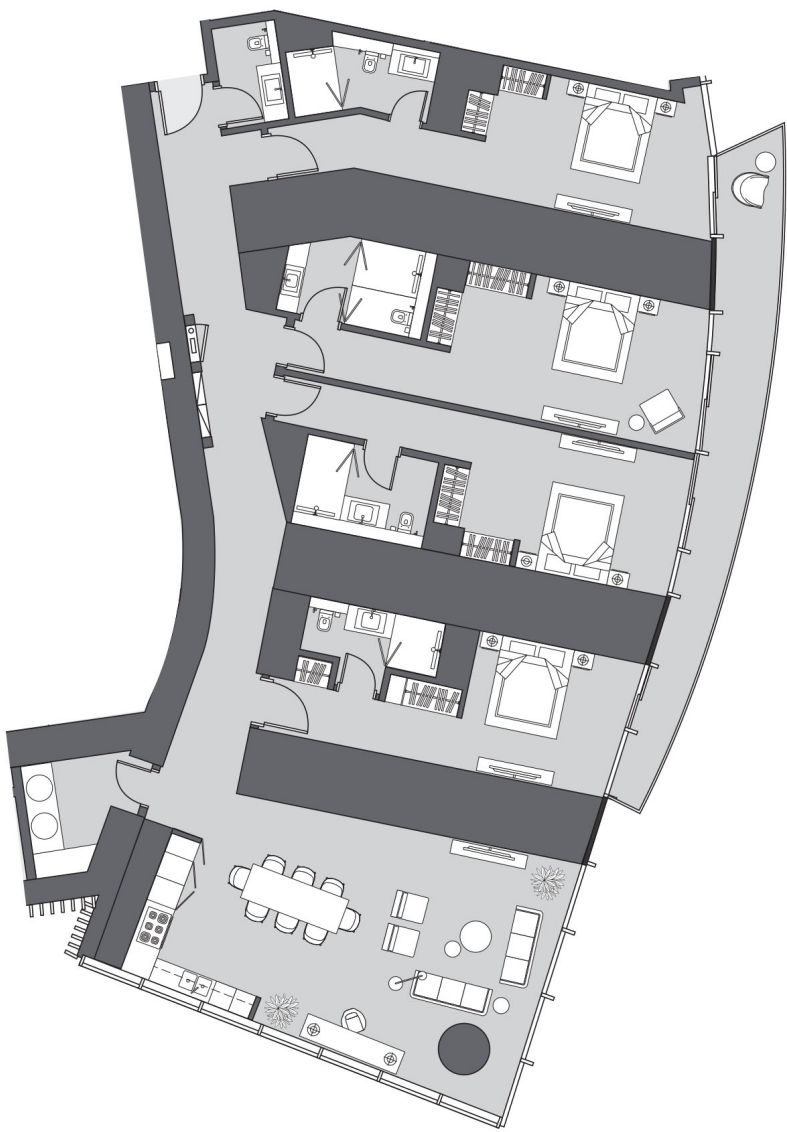
Apartment Area	286.84 m²	3,087.52 f²
Balcony Area	22.15 m²	238.42 f²
Total Area	308.99 m²	3,325.94 f²



Drawings are provided by our consultants. All dimensions, features and amenities are approximate at time of printing. Actual size may vary from stated area. Drawings not to scale E & OE. The developer reserves the right to make revisions to the floor plans and any features, materials and dimensions mentioned without further notice.

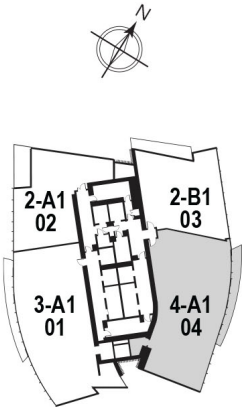
A1

4 Bedrooms
Type A1 | Unit 04
Tier 2, Levels 24 - 38



GOLF / CITY URBAN

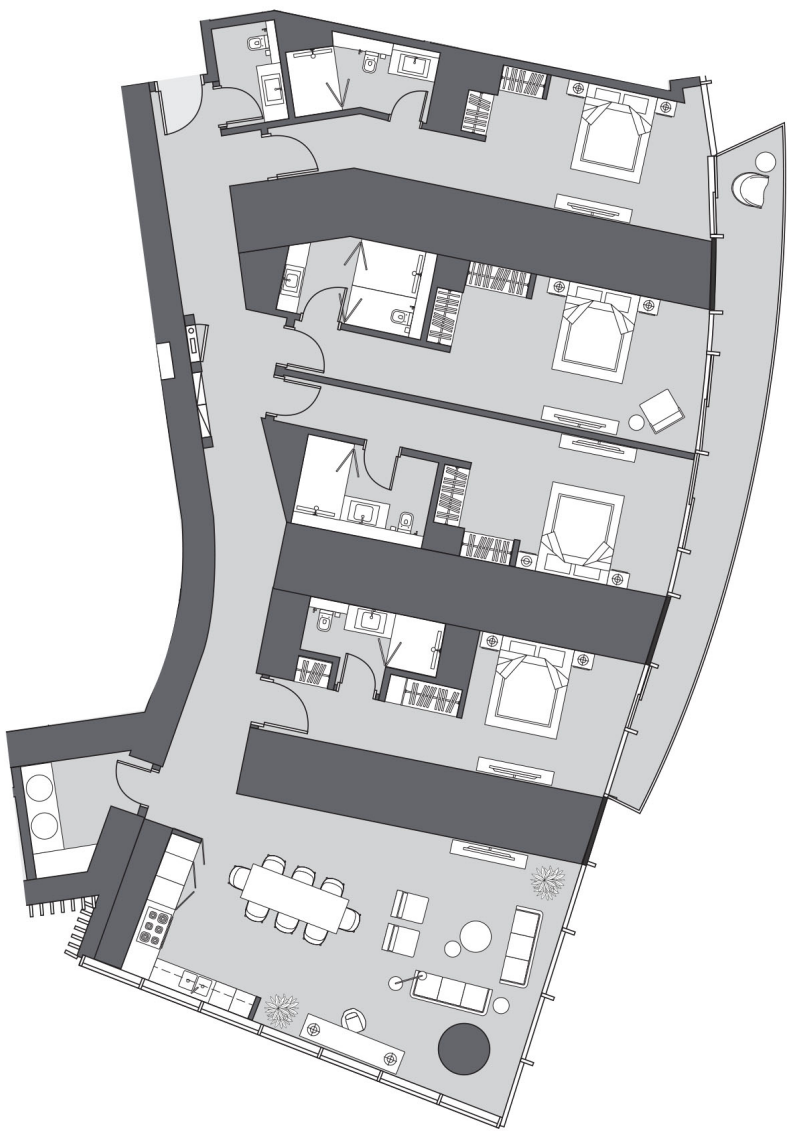
Apartment Area	286.84 m²	3,087.52 f²
Balcony Area	22.15 m²	238.42 f²
Total Area	308.99 m²	3,325.94 f²



Drawings are provided by our consultants. All dimensions, features and amenities are approximate at time of printing. Actual size may vary from stated area. Drawings not to scale E & OE. The developer reserves the right to make revisions to the floor plans and any features, materials and dimensions mentioned without further notice.

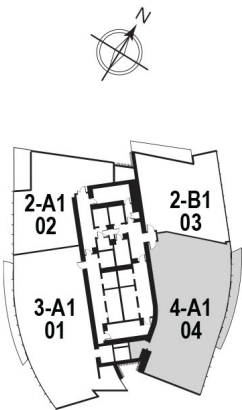
A1

4 Bedrooms
Type A1 | Unit 04
Tier 2, Levels 24 - 38



GOLF / CITY URBAN

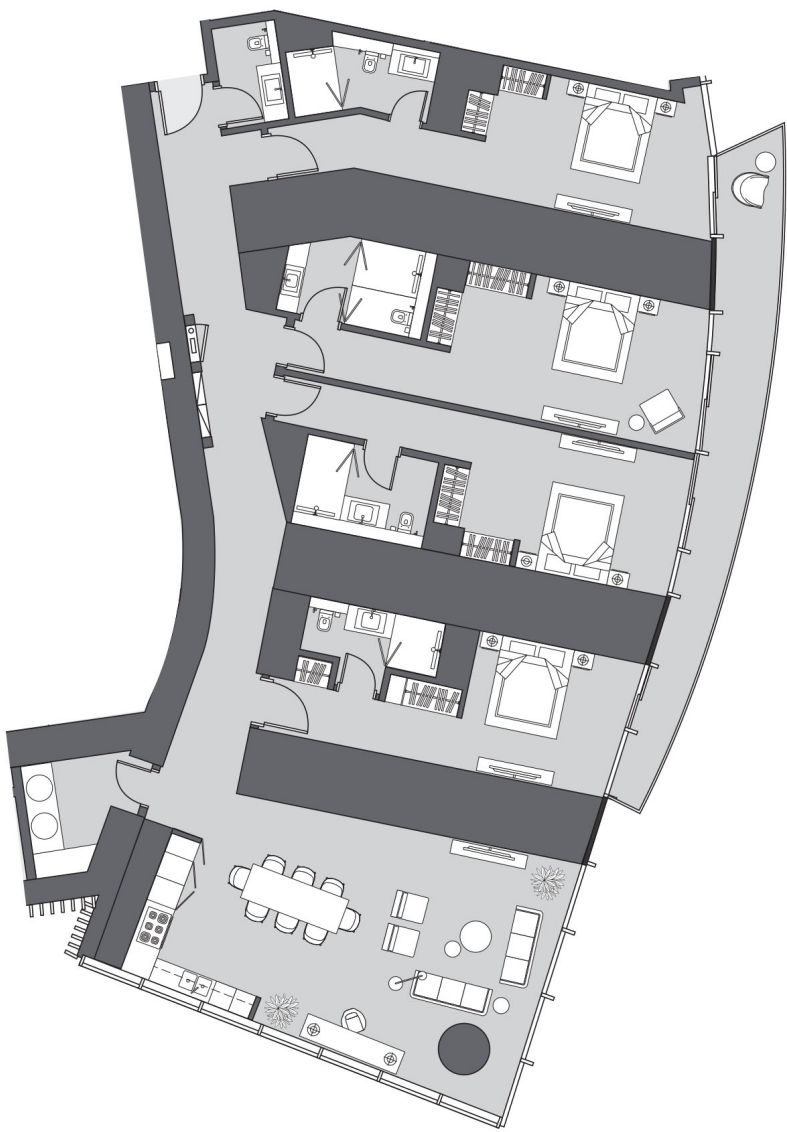
Apartment Area	286.84 m²	3,087.52 f²
Balcony Area	22.15 m²	238.42 f²
Total Area	308.99 m²	3,325.94 f²



Drawings are provided by our consultants. All dimensions, features and amenities are approximate at time of printing. Actual size may vary from stated area. Drawings not to scale E & OE. The developer reserves the right to make revisions to the floor plans and any features, materials and dimensions mentioned without further notice.

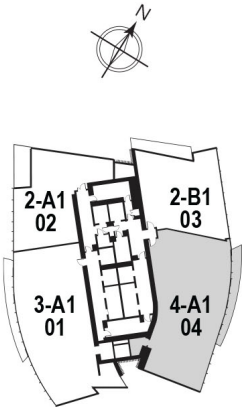
A1

4 Bedrooms
Type A1 | Unit 04
Tier 2, Levels 24 - 38



GOLF / CITY URBAN

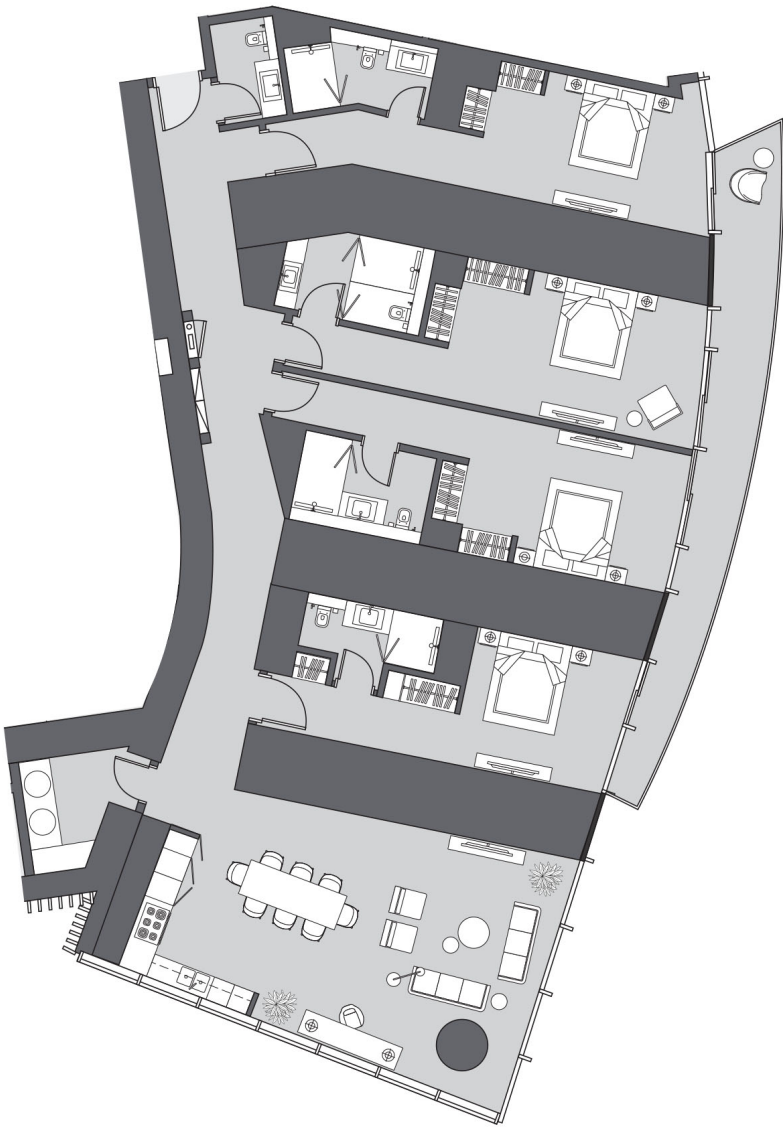
Apartment Area	286.84 m²	3,087.52 f²
Balcony Area	22.15 m²	238.42 f²
Total Area	308.99 m²	3,325.94 f²



Drawings are provided by our consultants. All dimensions, features and amenities are approximate at time of printing. Actual size may vary from stated area. Drawings not to scale E & OE. The developer reserves the right to make revisions to the floor plans and any features, materials and dimensions mentioned without further notice.

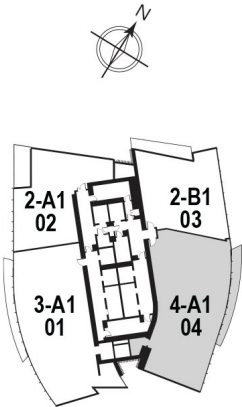
A1

4 Bedrooms
Type A1 | Unit 04
Tier 2, Levels 24 - 38



GOLF / CITY URBAN

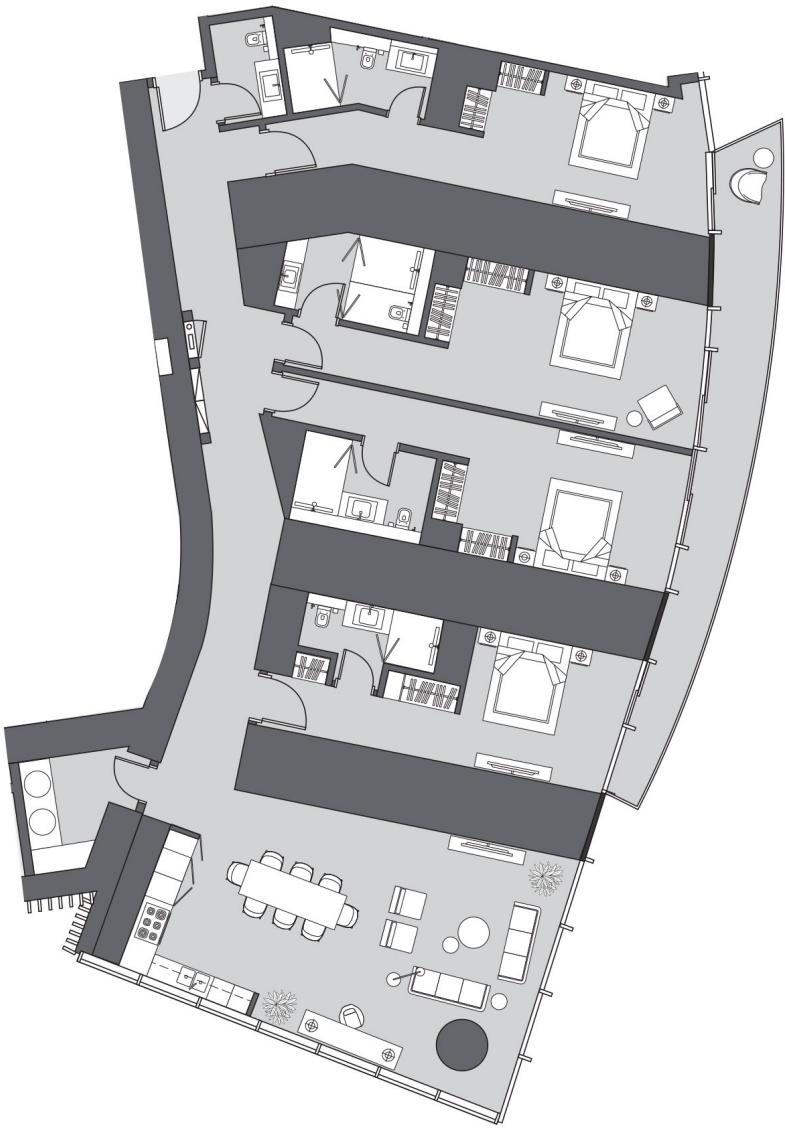
Apartment Area	286.84 m²	3,087.52 f²
Balcony Area	22.15 m²	238.42 f²
Total Area	308.99 m²	3,325.94 f²



Drawings are provided by our consultants. All dimensions, features and amenities are approximate at time of printing. Actual size may vary from stated area. Drawings not to scale E & OE. The developer reserves the right to make revisions to the floor plans and any features, materials and dimensions mentioned without further notice.

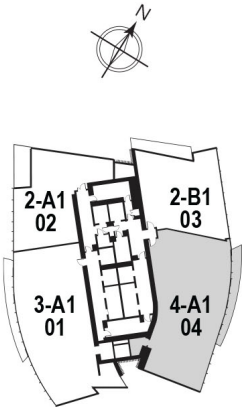
A1

4 Bedrooms
Type A1 | Unit 04
Tier 2, Levels 24 - 38



GOLF / CITY URBAN

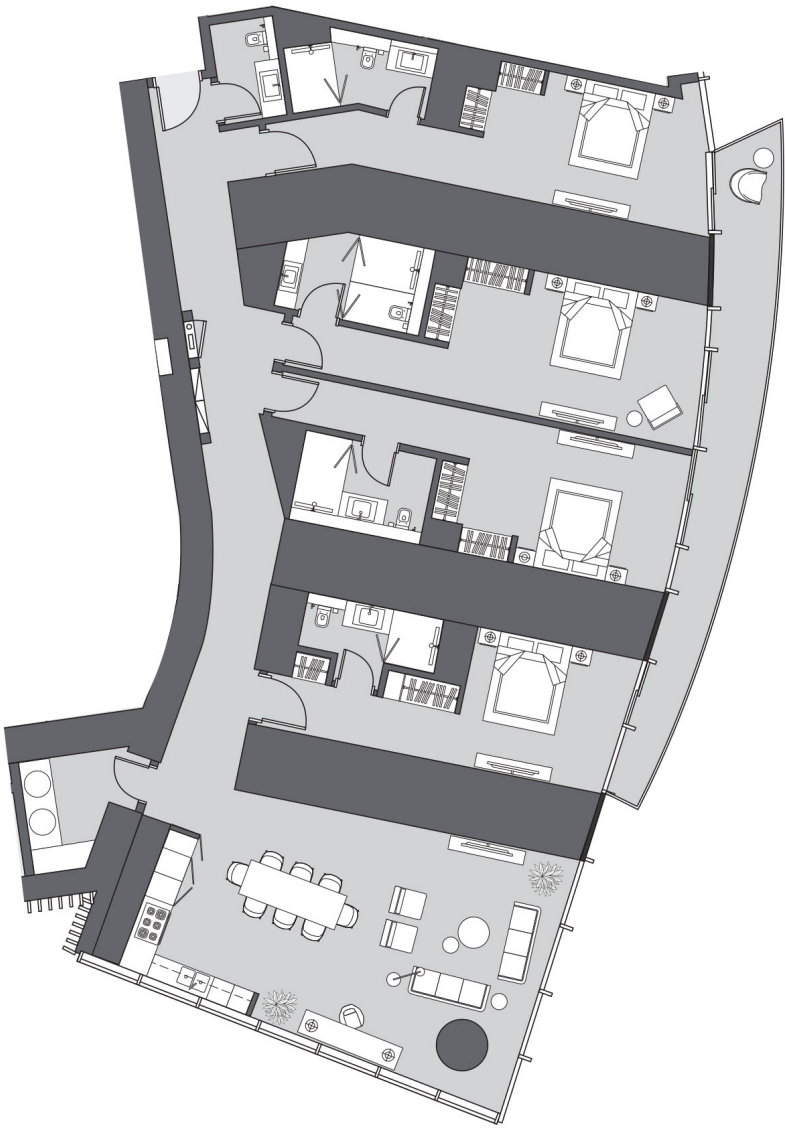
Apartment Area	286.84 m²	3,087.52 f²
Balcony Area	22.15 m²	238.42 f²
Total Area	308.99 m²	3,325.94 f²



Drawings are provided by our consultants. All dimensions, features and amenities are approximate at time of printing. Actual size may vary from stated area. Drawings not to scale E & OE. The developer reserves the right to make revisions to the floor plans and any features, materials and dimensions mentioned without further notice.

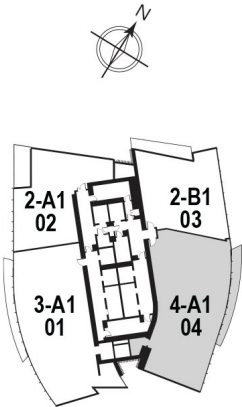
A1

4 Bedrooms
Type A1 | Unit 04
Tier 2, Levels 24 - 38



GOLF / CITY URBAN

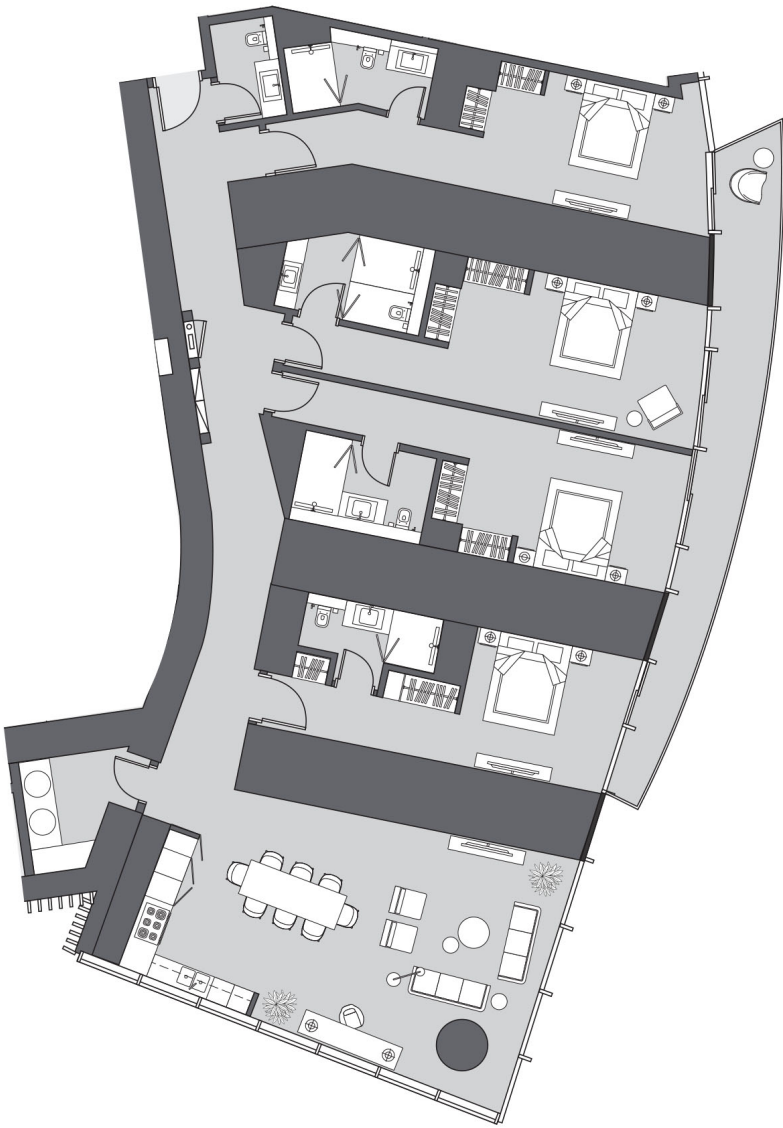
Apartment Area	286.84 m²	3,087.52 f²
Balcony Area	22.15 m²	238.42 f²
Total Area	308.99 m²	3,325.94 f²



Drawings are provided by our consultants. All dimensions, features and amenities are approximate at time of printing. Actual size may vary from stated area. Drawings not to scale E & OE. The developer reserves the right to make revisions to the floor plans and any features, materials and dimensions mentioned without further notice.

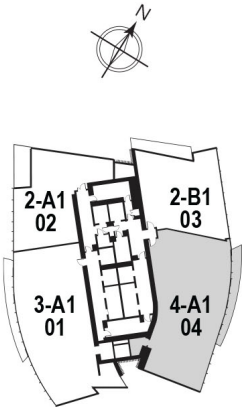
A1

4 Bedrooms
Type A1 | Unit 04
Tier 2, Levels 24 - 38



GOLF / CITY URBAN

Apartment Area	286.84 m²	3,087.52 f²
Balcony Area	22.15 m²	238.42 f²
Total Area	308.99 m²	3,325.94 f²



Drawings are provided by our consultants. All dimensions, features and amenities are approximate at time of printing. Actual size may vary from stated area. Drawings not to scale E & OE. The developer reserves the right to make revisions to the floor plans and any features, materials and dimensions mentioned without further notice.

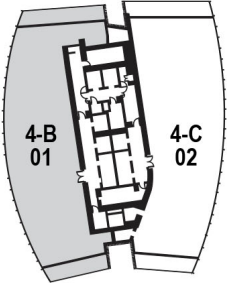
B

4 Bedrooms
Type B | Unit 01
Tier 3, Levels 41 - 61

SEA / SKYLINE / PALM



GOLF / CITY URBAN



Apartment Area	425.93 m ²	4,584.67 f ²
Balcony Area	57.97 m ²	623.98 f ²
Total Area	483.9 m ²	5,208.66 f ²

Drawings are provided by our consultants. All dimensions, features and amenities are approximate at time of printing. Actual size may vary from stated area. Drawings not to scale E & OE. The developer reserves the right to make revisions to the floor plans and any features, materials and dimensions mentioned without further notice.

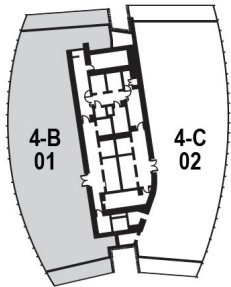
B

4 Bedrooms
Type B | Unit 01
Tier 3, Levels 41 - 61

SEA / SKYLINE / PALM



GOLF / CITY URBAN



Apartment Area	425.93 m ²	4,584.67 f ²
Balcony Area	57.97 m ²	623.98 f ²
Total Area	483.9 m ²	5,208.66 f ²

Drawings are provided by our consultants. All dimensions, features and amenities are approximate at time of printing. Actual size may vary from stated area. Drawings not to scale E & OE. The developer reserves the right to make revisions to the floor plans and any features, materials and dimensions mentioned without further notice.

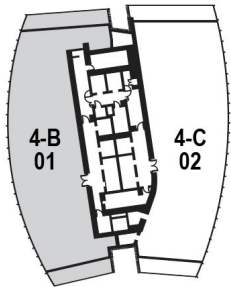
B

4 Bedrooms
Type B | Unit 01
Tier 3, Levels 41 - 61

SEA / SKYLINE / PALM



GOLF / CITY URBAN



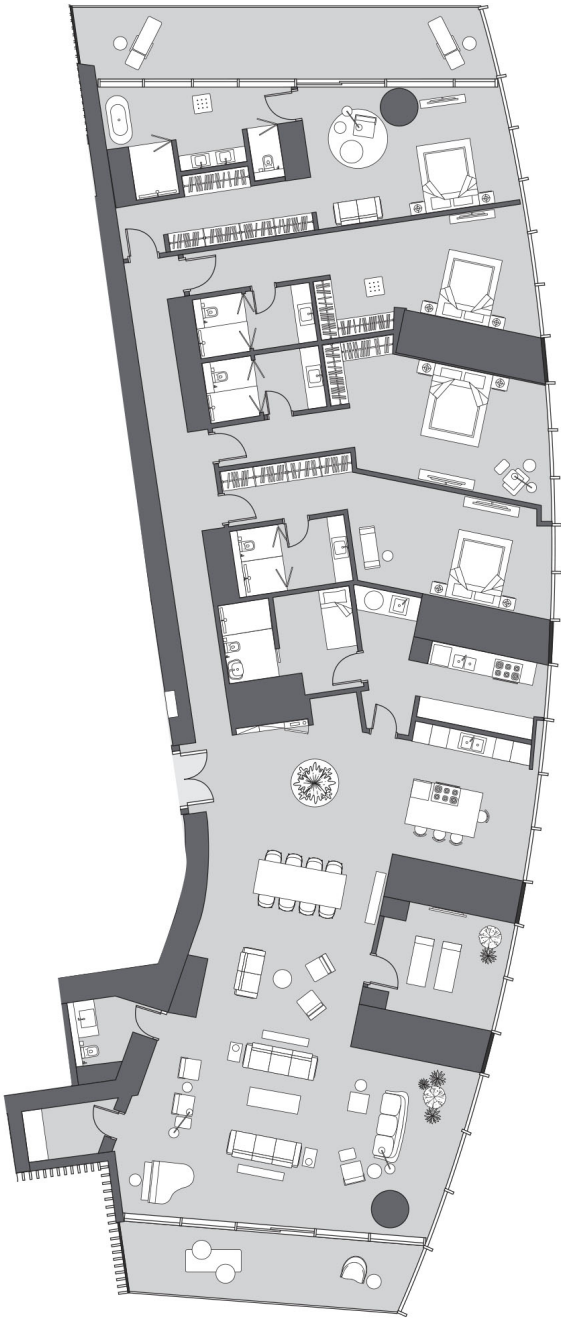
Apartment Area	425.93 m ²	4,584.67 f ²
Balcony Area	57.97 m ²	623.98 f ²
Total Area	483.9 m ²	5,208.66 f ²

Drawings are provided by our consultants. All dimensions, features and amenities are approximate at time of printing. Actual size may vary from stated area. Drawings not to scale E & OE. The developer reserves the right to make revisions to the floor plans and any features, materials and dimensions mentioned without further notice.

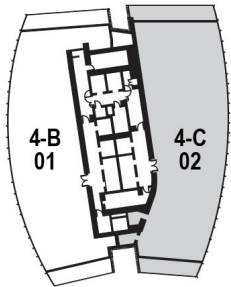
C

4 Bedrooms
Type C | Unit 02
Tier 3, Levels 41 - 61

SEA / SKYLINE / PALM



GOLF / CITY URBAN



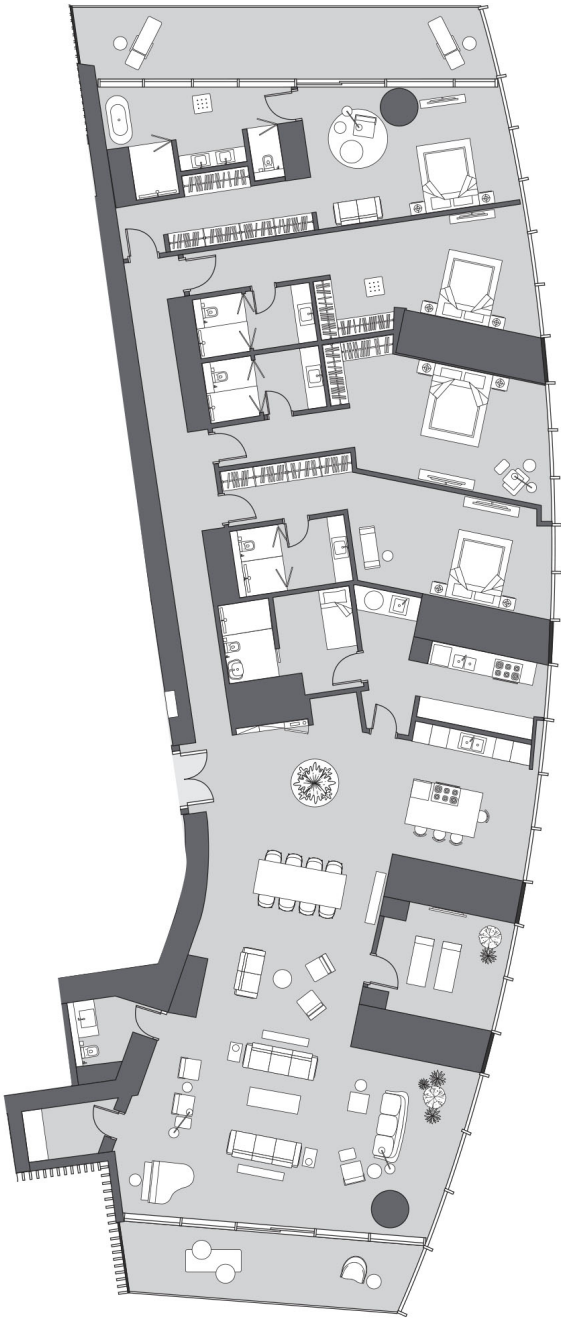
Apartment Area	478.91 m ²	5,154.94 f ²
Balcony Area	57.48 m ²	618.71 f ²
Total Area	536.39 m ²	5,773.65 f ²

Drawings are provided by our consultants. All dimensions, features and amenities are approximate at time of printing. Actual size may vary from stated area. Drawings not to scale E & OE. The developer reserves the right to make revisions to the floor plans and any features, materials and dimensions mentioned without further notice.

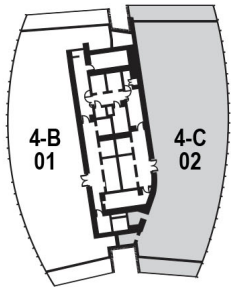
C

4 Bedrooms
Type C | Unit 02
Tier 3, Levels 41 - 61

SEA / SKYLINE / PALM



GOLF / CITY URBAN



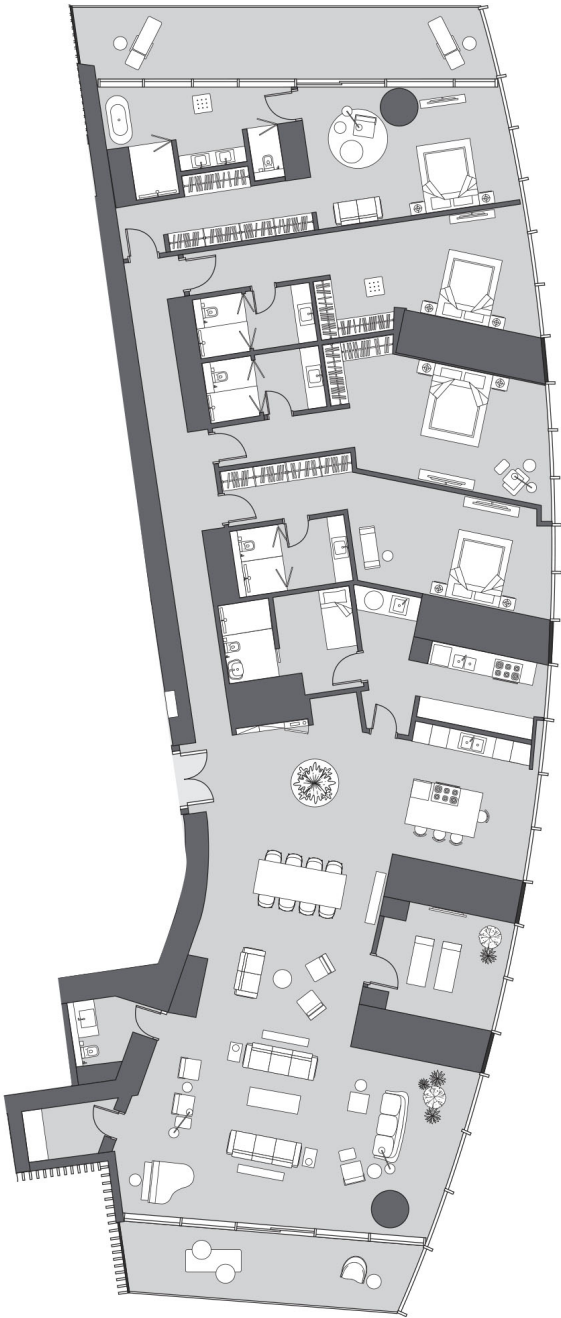
Apartment Area	478.91 m ²	5,154.94 ƒ ²
Balcony Area	57.48 m ²	618.71 ƒ ²
Total Area	536.39 m ²	5,773.65 ƒ ²

Drawings are provided by our consultants. All dimensions, features and amenities are approximate at time of printing. Actual size may vary from stated area. Drawings not to scale E & OE. The developer reserves the right to make revisions to the floor plans and any features, materials and dimensions mentioned without further notice.

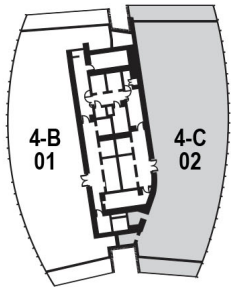
C

4 Bedrooms
Type C | Unit 02
Tier 3, Levels 41 - 61

SEA / SKYLINE / PALM



GOLF / CITY URBAN



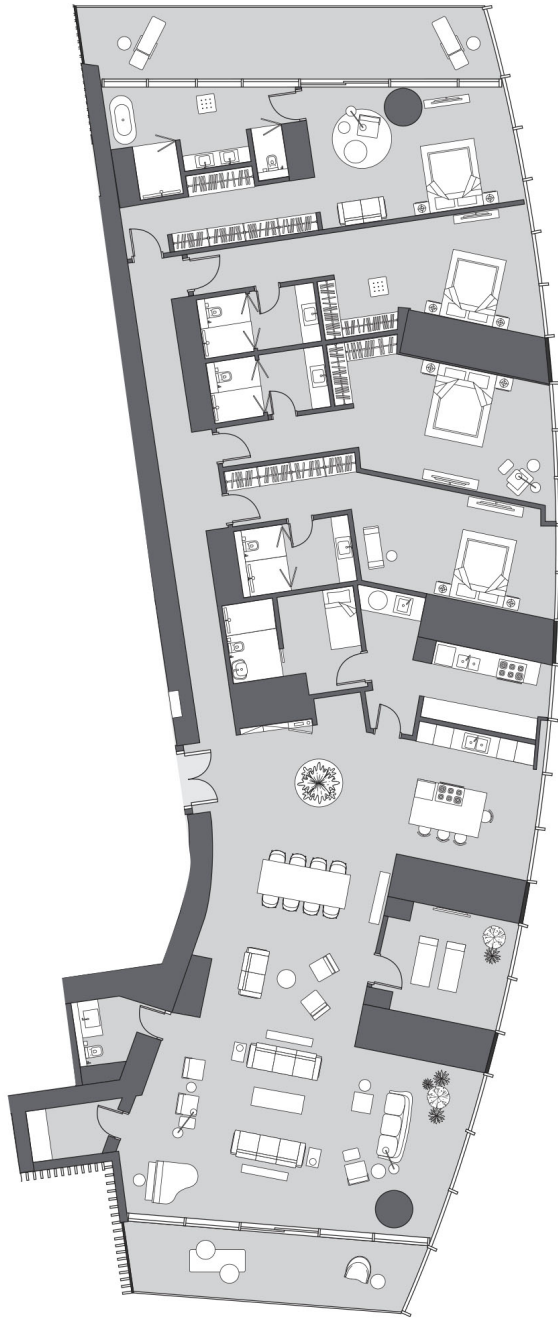
Apartment Area	478.91 m ²	5,154.94 f ²
Balcony Area	57.48 m ²	618.71 f ²
Total Area	536.39 m ²	5,773.65 f ²

Drawings are provided by our consultants. All dimensions, features and amenities are approximate at time of printing. Actual size may vary from stated area. Drawings not to scale E & OE. The developer reserves the right to make revisions to the floor plans and any features, materials and dimensions mentioned without further notice.

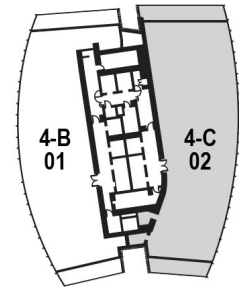
C

4 Bedrooms
Type C | Unit 02
Tier 3, Levels 41 - 61

SEA / SKYLINE / PALM



GOLF / CITY URBAN



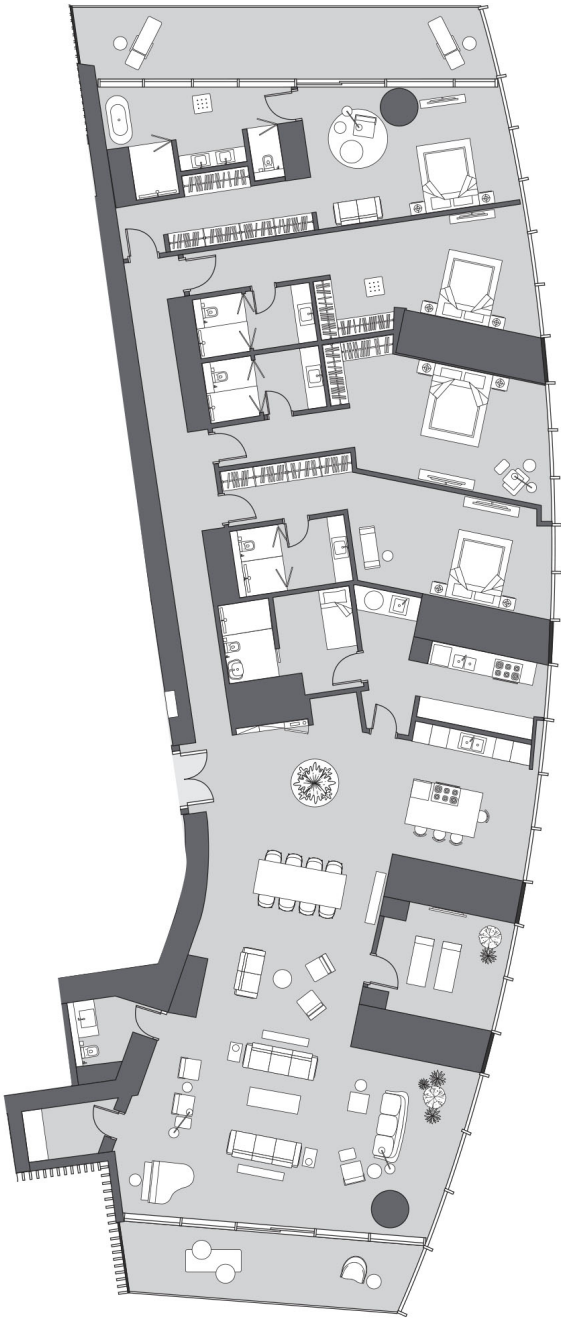
Apartment Area	478.91 m ²	5,154.94 f ²
Balcony Area	57.48 m ²	618.71 f ²
Total Area	536.39 m ²	5,773.65 f ²

Drawings are provided by our consultants. All dimensions, features and amenities are approximate at time of printing. Actual size may vary from stated area. Drawings not to scale E & OE. The developer reserves the right to make revisions to the floor plans and any features, materials and dimensions mentioned without further notice.

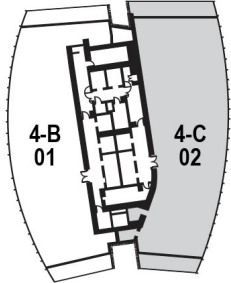
C

4 Bedrooms
Type C | Unit 02
Tier 3, Levels 41 - 61

SEA / SKYLINE / PALM



GOLF / CITY URBAN



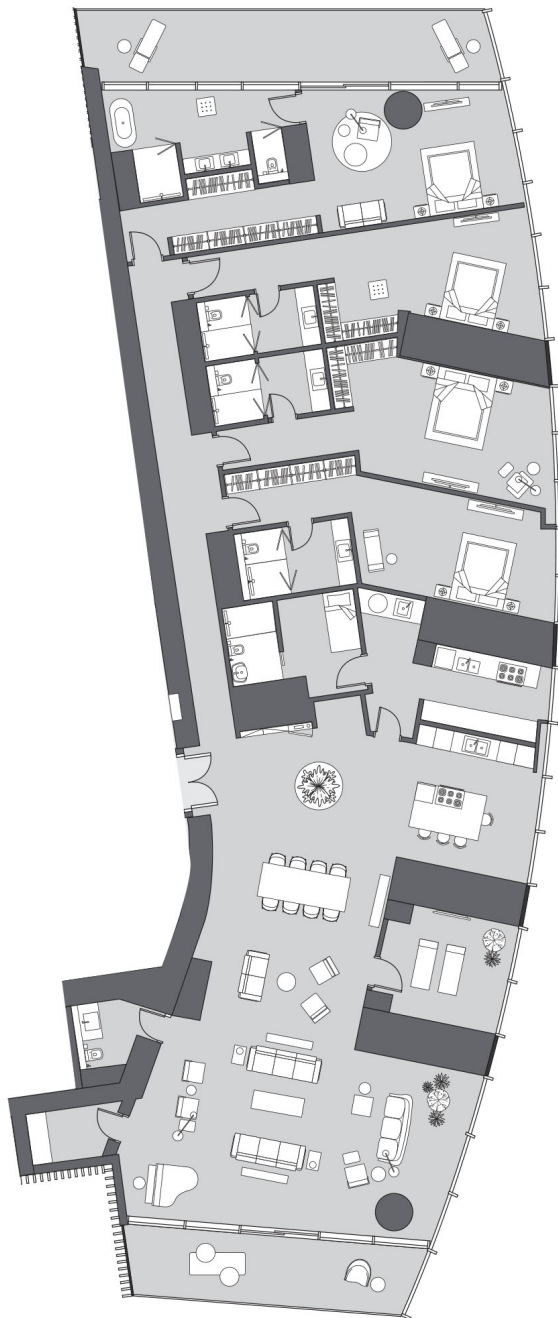
Apartment Area	478.91 m ²	5,154.94 ʹ ²
Balcony Area	57.48 m ²	618.71 ʹ ²
Total Area	536.39 m ²	5,773.65 ʹ ²

Drawings are provided by our consultants. All dimensions, features and amenities are approximate at time of printing. Actual size may vary from stated area. Drawings not to scale E & OE. The developer reserves the right to make revisions to the floor plans and any features, materials and dimensions mentioned without further notice.

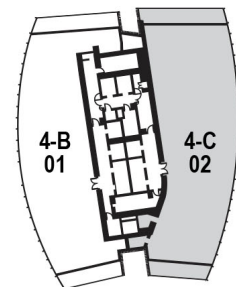
C

4 Bedrooms
Type C | Unit 02
Tier 3, Levels 41 - 61

SEA / SKYLINE / PALM



GOLF / CITY URBAN



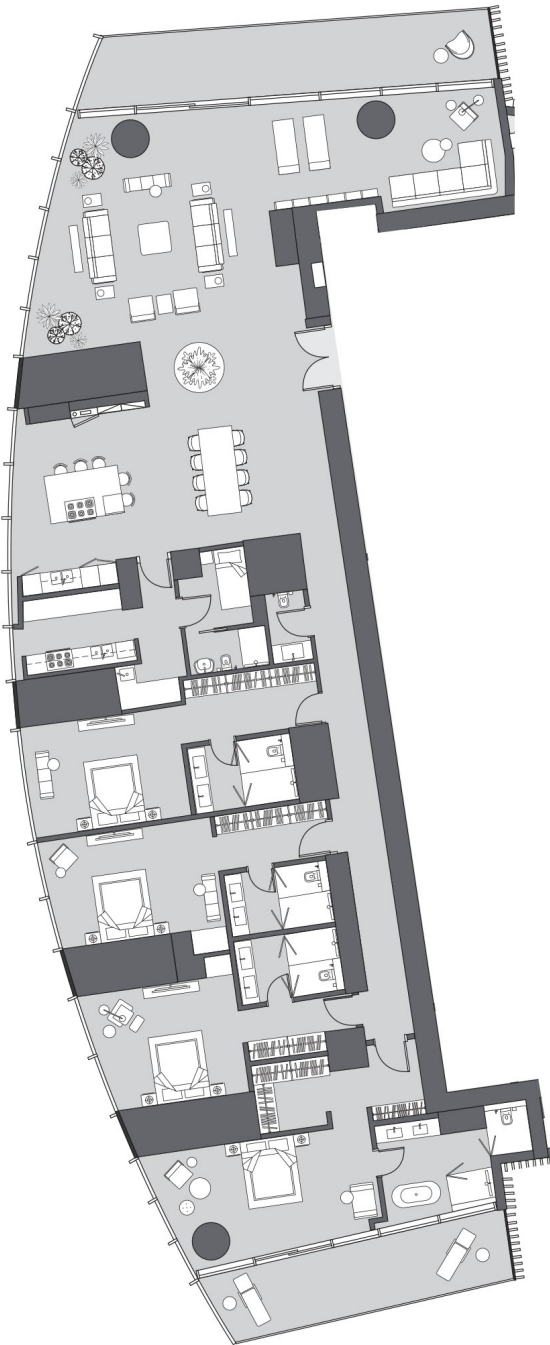
Apartment Area	478.91 m ²	5,154.94 f ²
Balcony Area	57.48 m ²	618.71 f ²
Total Area	536.39 m ²	5,773.65 f ²

Drawings are provided by our consultants. All dimensions, features and amenities are approximate at time of printing. Actual size may vary from stated area. Drawings not to scale E & OE. The developer reserves the right to make revisions to the floor plans and any features, materials and dimensions mentioned without further notice.

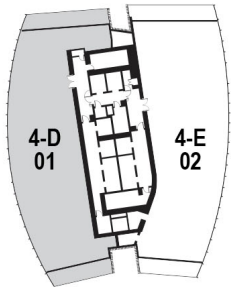
D

4 Bedrooms
Type D | Unit 01
Tier 4, Levels 64 - 84 & Tier 5, Level 89 - 106

SEA / SKYLINE / PALM



GOLF / CITY URBAN



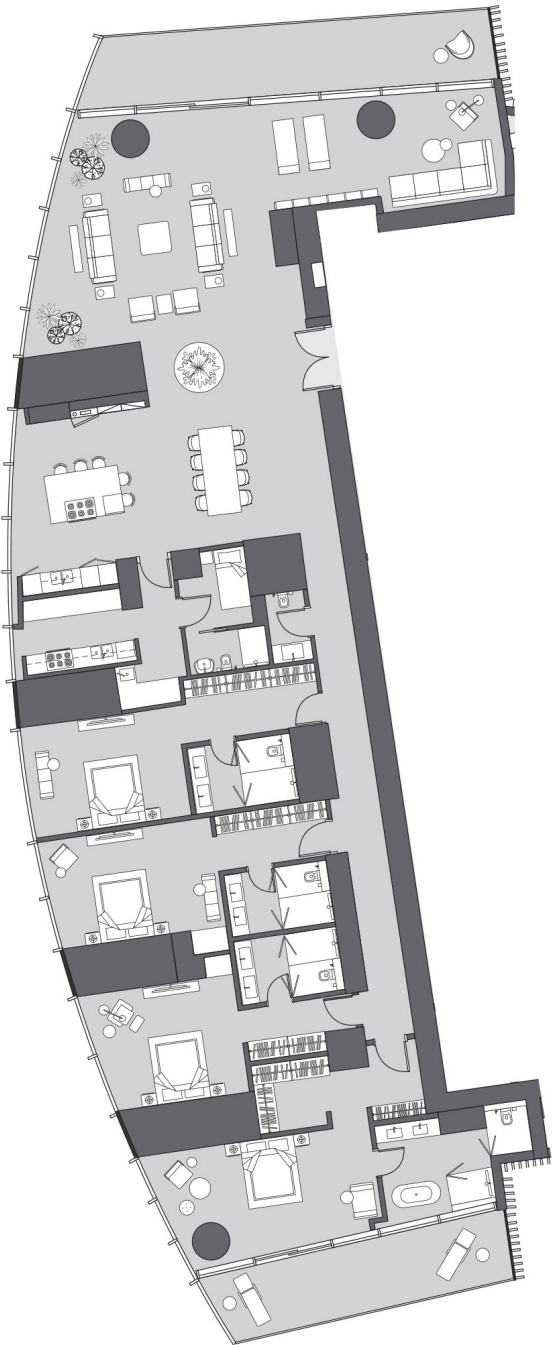
Apartment Area	425.93 m ²	4,584.67 f ²
Balcony Area	57.98 m ²	624.09 f ²
Total Area	483.91 m ²	5,208.76 f ²

Drawings are provided by our consultants. All dimensions, features and amenities are approximate at time of printing. Actual size may vary from stated area. Drawings not to scale E & OE. The developer reserves the right to make revisions to the floor plans and any features, materials and dimensions mentioned without further notice.

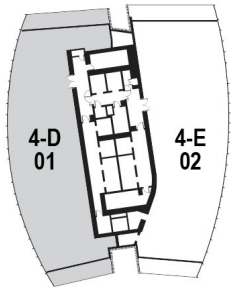
D

4 Bedrooms
Type D | Unit 01
Tier 4, Levels 64 - 84 & Tier 5, Level 89 - 106

SEA / SKYLINE / PALM



GOLF / CITY URBAN



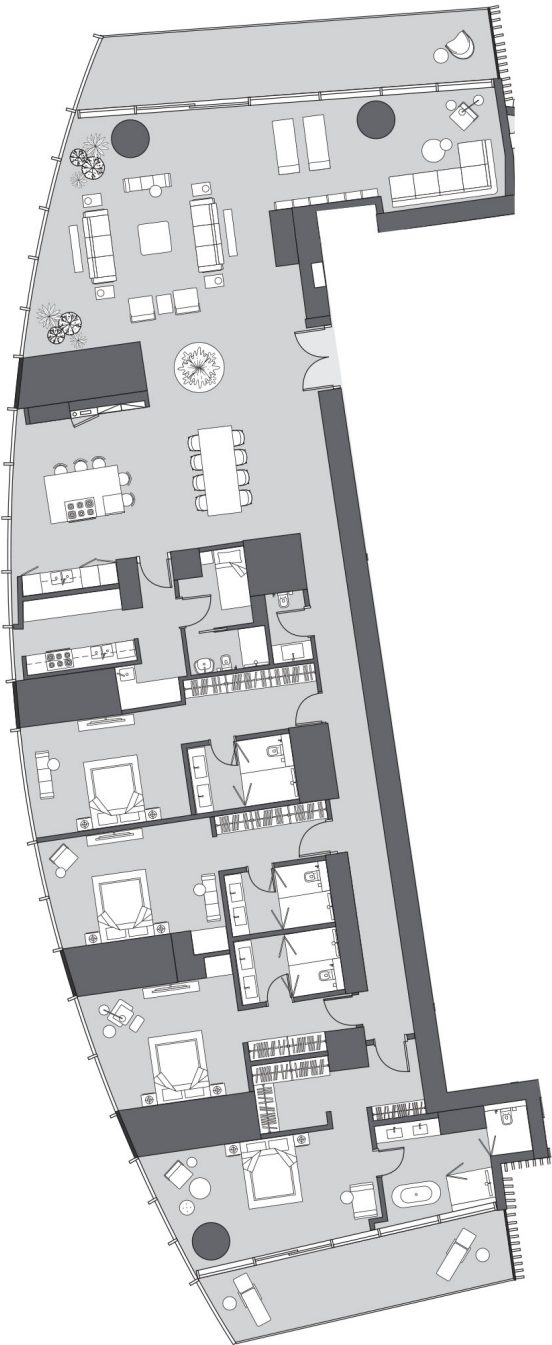
Apartment Area	425.93 m ²	4,584.67 f ²
Balcony Area	57.98 m ²	624.09 f ²
Total Area	483.91 m ²	5,208.76 f ²

Drawings are provided by our consultants. All dimensions, features and amenities are approximate at time of printing. Actual size may vary from stated area. Drawings not to scale E & OE. The developer reserves the right to make revisions to the floor plans and any features, materials and dimensions mentioned without further notice.

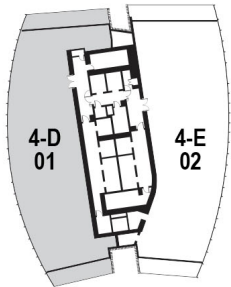
D

4 Bedrooms
Type D | Unit 01
Tier 4, Levels 64 - 84 & Tier 5, Level 89 - 106

SEA / SKYLINE / PALM



GOLF / CITY URBAN



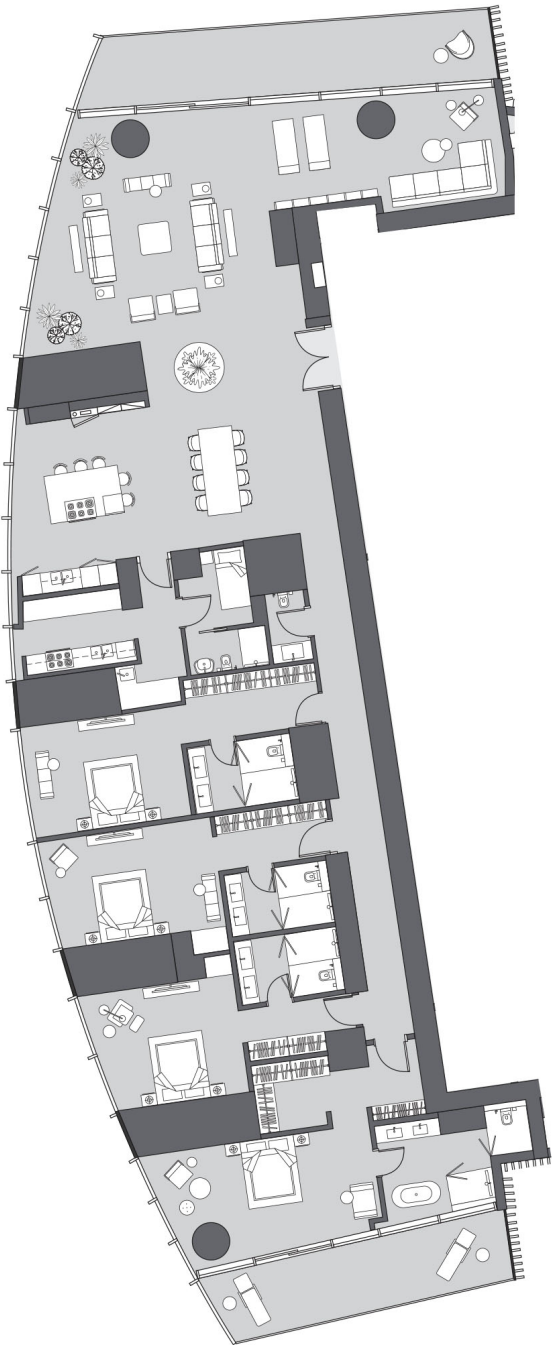
Apartment Area	425.93 m ²	4,584.67 f ²
Balcony Area	57.98 m ²	624.09 f ²
Total Area	483.91 m ²	5,208.76 f ²

Drawings are provided by our consultants. All dimensions, features and amenities are approximate at time of printing. Actual size may vary from stated area. Drawings not to scale E & OE. The developer reserves the right to make revisions to the floor plans and any features, materials and dimensions mentioned without further notice.

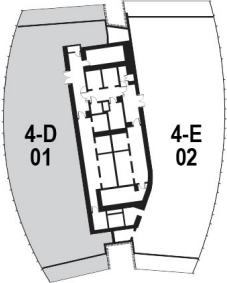
D

4 Bedrooms
Type D | Unit 01
Tier 4, Levels 64 - 84 & Tier 5, Level 89 - 106

SEA / SKYLINE / PALM



GOLF / CITY URBAN



Apartment Area	425.93 m ²	4,584.67 f ²
Balcony Area	57.98 m ²	624.09 f ²
Total Area	483.91 m ²	5,208.76 f ²

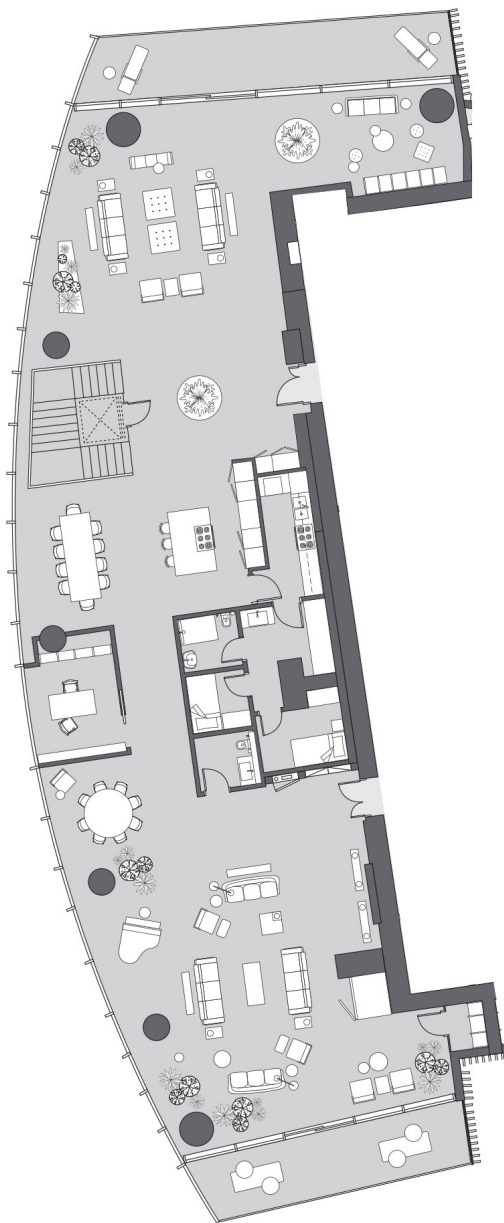
Drawings are provided by our consultants. All dimensions, features and amenities are approximate at time of printing. Actual size may vary from stated area. Drawings not to scale E & OE. The developer reserves the right to make revisions to the floor plans and any features, materials and dimensions mentioned without further notice.

Duplex A

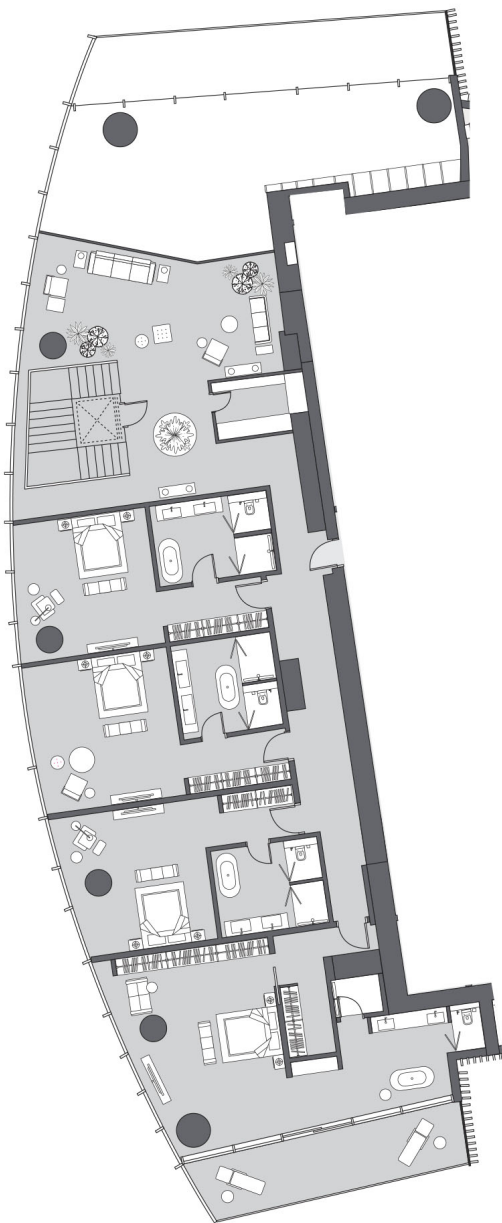
4 Bedrooms
Duplex A | Unit 01
Levels 111 - 112

SEA / SKYLINE / PALM

Lower Level 111



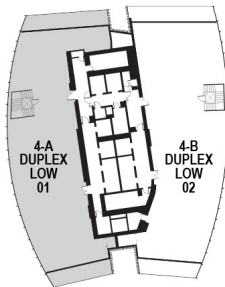
Upper Level 112



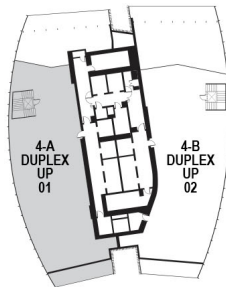
GOLF / CITY URBAN



Apartment Area	796.25 m ²	8,570.76 f ²
Balcony Area	83.07 m ²	894.16 f ²
Total Area	879.32 m ²	9,464.92 f ²



Lower Level 111



Upper Level 112

Drawings are provided by our consultants. All dimensions, features and amenities are approximate at time of printing. Actual size may vary from stated area. Drawings not to scale E & OE. The developer reserves the right to make revisions to the floor plans and any features, materials and dimensions mentioned without further notice.

Duplex B1

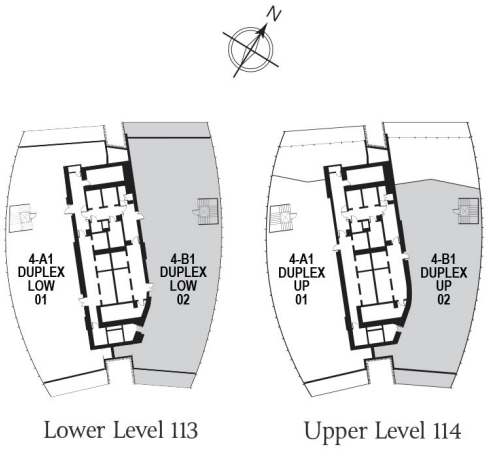
4 Bedrooms
Duplex B1 | Unit 02
Levels 113 - 114

SEA / SKYLINE / PALM



GOLF / CITY URBAN

Apartment Area	857.07 m ²	9,225.42 f ²
Balcony Area	77.95 m ²	839.05 f ²
Total Area	935.02 m ²	10,064.47 f ²

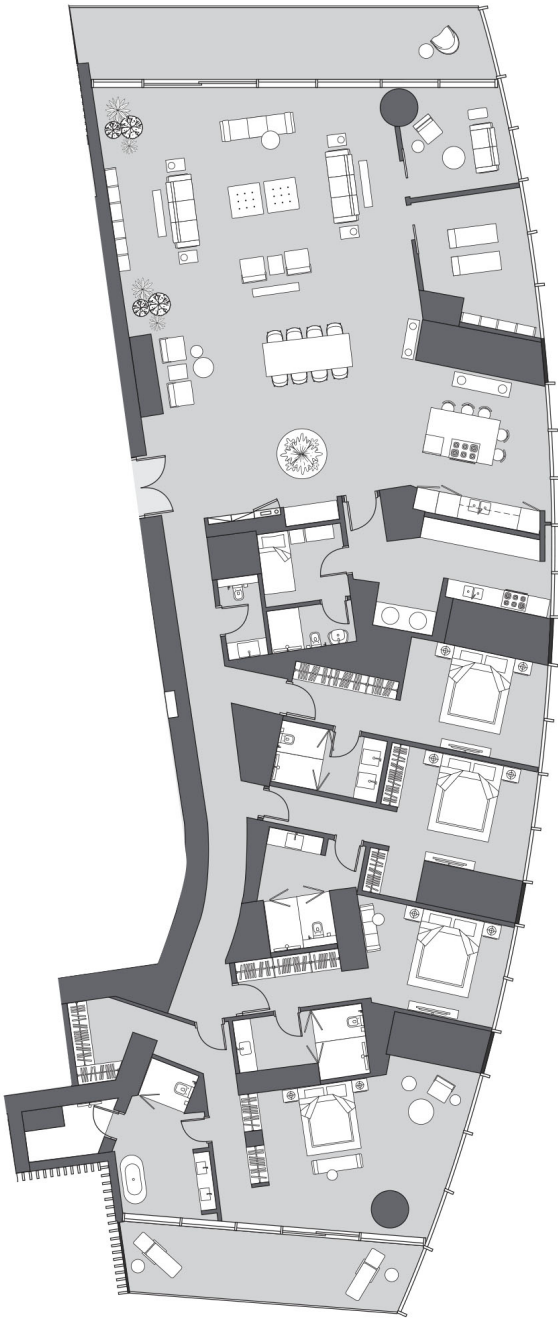


Drawings are provided by our consultants. All dimensions, features and amenities are approximate at time of printing. Actual size may vary from stated area. Drawings not to scale E & OE. The developer reserves the right to make revisions to the floor plans and any features, materials and dimensions mentioned without further notice.

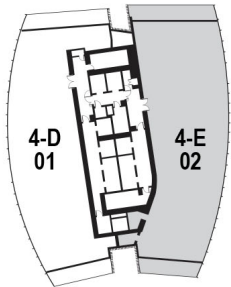
E

4 Bedrooms
Type E | Unit 02
Tier 4, Levels 64 - 84 & Tier 5, Level 89 - 106

SEA / SKYLINE / PALM



GOLF / CITY URBAN



Apartment Area	473.28 m ²	5,094.34 f ²
Balcony Area	57.47 m ²	618.6 f ²
Total Area	530.75 m ²	5,712.95 f ²

Drawings are provided by our consultants. All dimensions, features and amenities are approximate at time of printing. Actual size may vary from stated area. Drawings not to scale E & OE. The developer reserves the right to make revisions to the floor plans and any features, materials and dimensions mentioned without further notice.

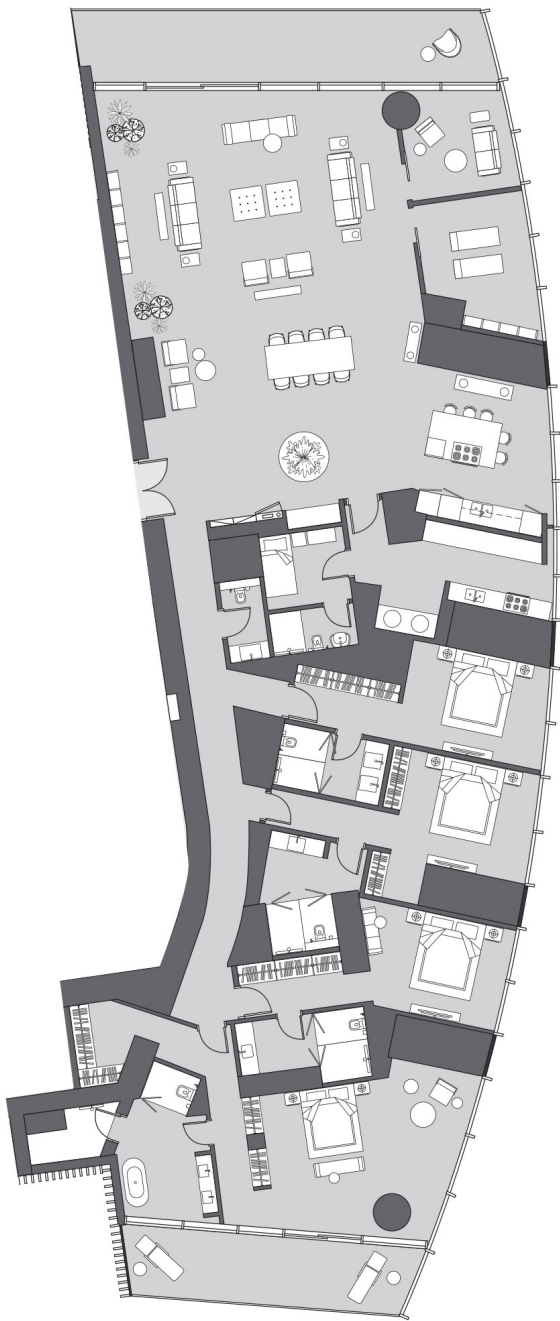
E

4 Bedrooms

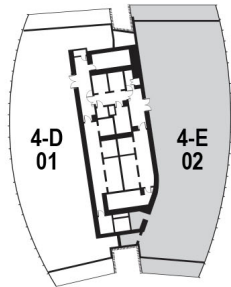
Type E | Unit 02

Tier 4, Levels 64 - 84 & Tier 5, Level 89 - 106

SEA / SKYLINE / PALM



GOLF / CITY URBAN



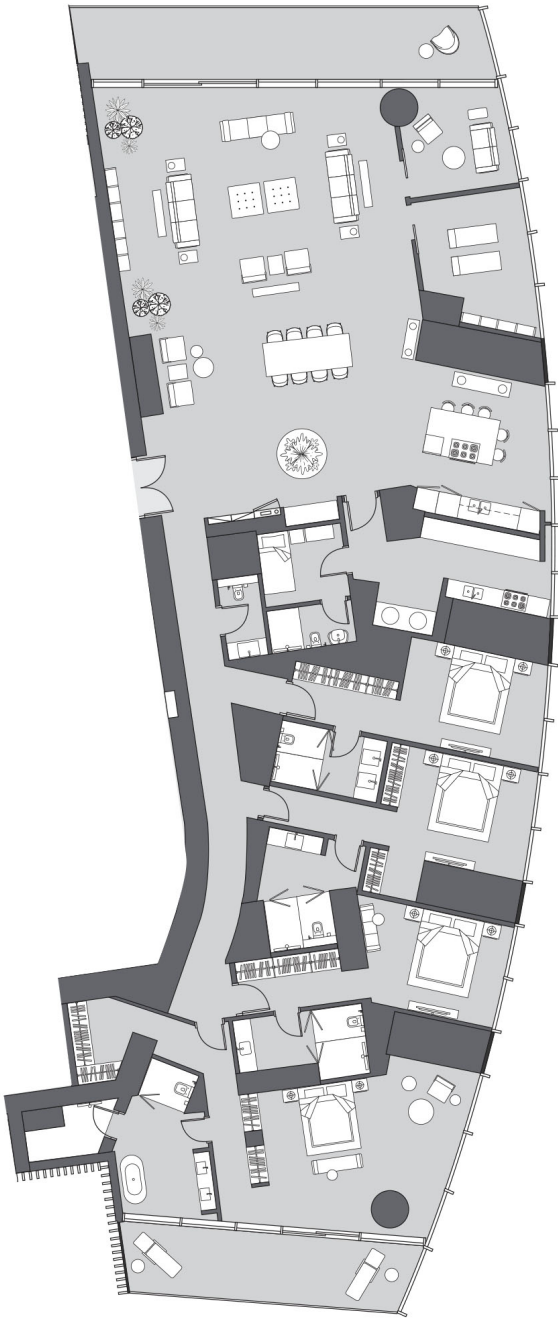
Apartment Area	473.28 m ²	5,094.34 f ²
Balcony Area	57.47 m ²	618.6 f ²
Total Area	530.75 m ²	5,712.95 f ²

Drawings are provided by our consultants. All dimensions, features and amenities are approximate at time of printing. Actual size may vary from stated area. Drawings not to scale E & OE. The developer reserves the right to make revisions to the floor plans and any features, materials and dimensions mentioned without further notice.

E

4 Bedrooms
Type E | Unit 02
Tier 4, Levels 64 - 84 & Tier 5, Level 89 - 106

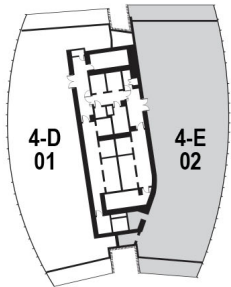
SEA / SKYLINE / PALM



GOLF / CITY URBAN



Apartment Area	473.28 m ²	5,094.34 f ²
Balcony Area	57.47 m ²	618.6 f ²
Total Area	530.75 m ²	5,712.95 f ²



Drawings are provided by our consultants. All dimensions, features and amenities are approximate at time of printing. Actual size may vary from stated area. Drawings not to scale E & OE. The developer reserves the right to make revisions to the floor plans and any features, materials and dimensions mentioned without further notice.

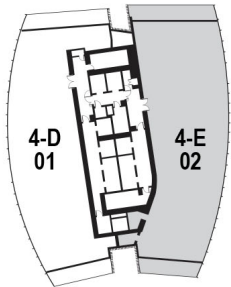
E

4 Bedrooms
Type E | Unit 02
Tier 4, Levels 64 - 84 & Tier 5, Level 89 - 106

SEA / SKYLINE / PALM



GOLF / CITY URBAN



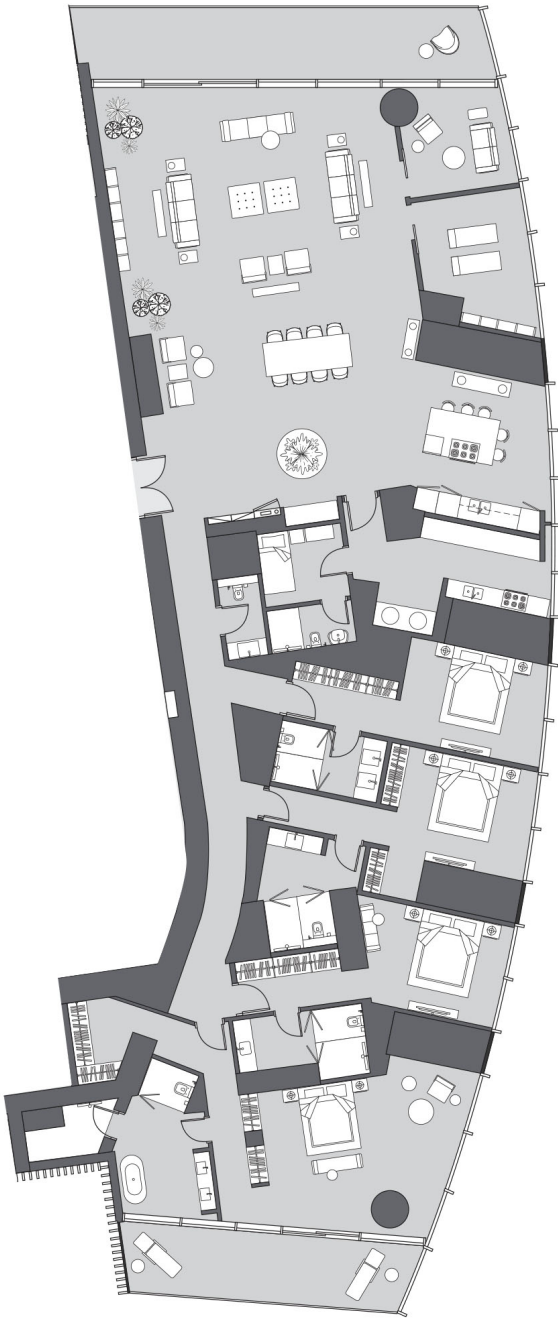
Apartment Area	473.28 m ²	5,094.34 f ²
Balcony Area	57.47 m ²	618.6 f ²
Total Area	530.75 m ²	5,712.95 f ²

Drawings are provided by our consultants. All dimensions, features and amenities are approximate at time of printing. Actual size may vary from stated area. Drawings not to scale E & OE. The developer reserves the right to make revisions to the floor plans and any features, materials and dimensions mentioned without further notice.

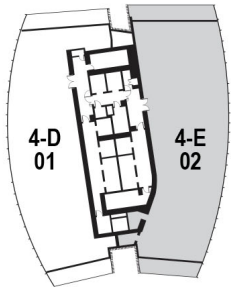
E

4 Bedrooms
Type E | Unit 02
Tier 4, Levels 64 - 84 & Tier 5, Level 89 - 106

SEA / SKYLINE / PALM



GOLF / CITY URBAN



Apartment Area	473.28 m ²	5,094.34 f ²
Balcony Area	57.47 m ²	618.6 f ²
Total Area	530.75 m ²	5,712.95 f ²

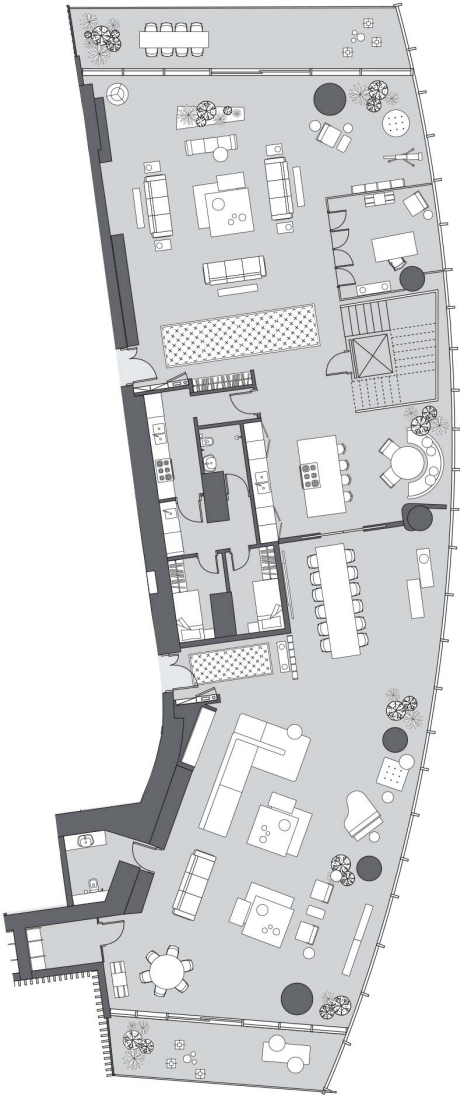
Drawings are provided by our consultants. All dimensions, features and amenities are approximate at time of printing. Actual size may vary from stated area. Drawings not to scale E & OE. The developer reserves the right to make revisions to the floor plans and any features, materials and dimensions mentioned without further notice.

Triplex B

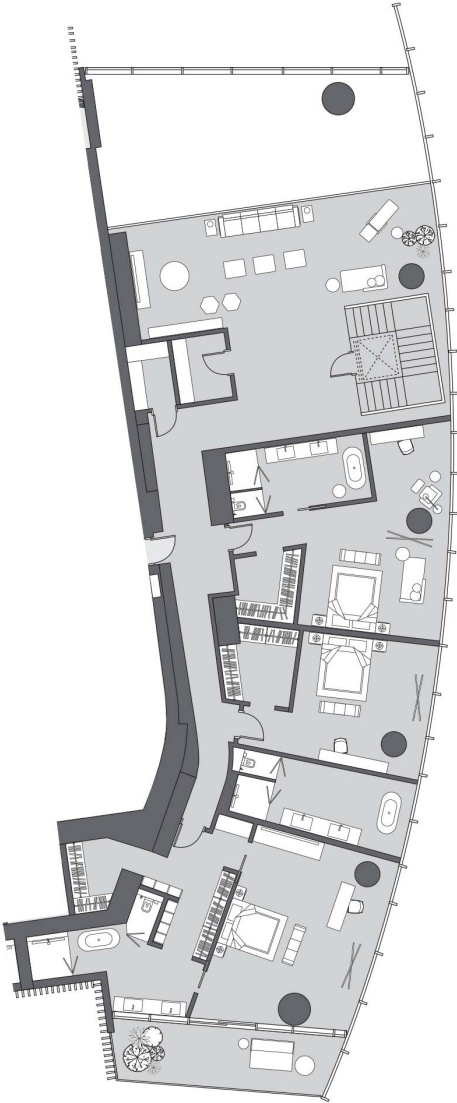
5 Bedrooms
Triplex B | Unit 02
Levels 117 - 119

SEA / SKYLINE / PALM

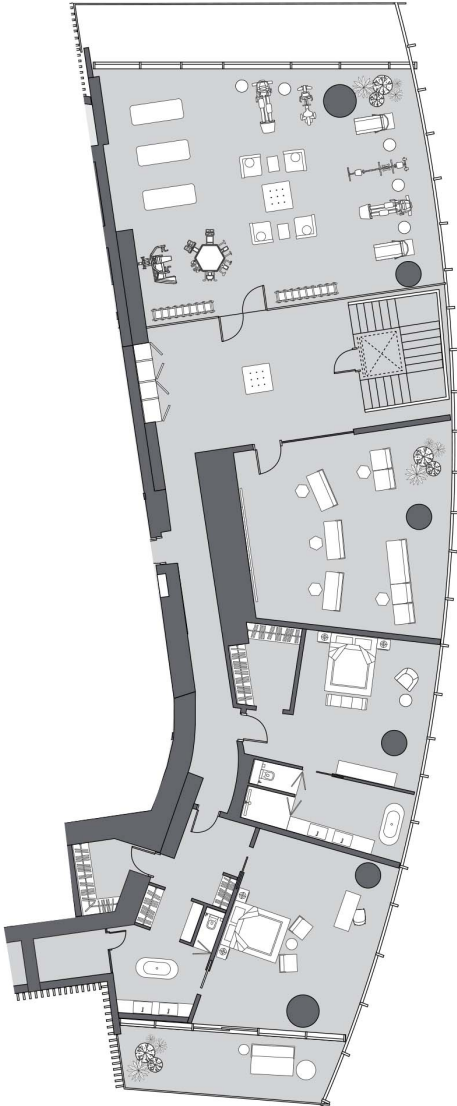
Lower Level 117



Mid Level 118

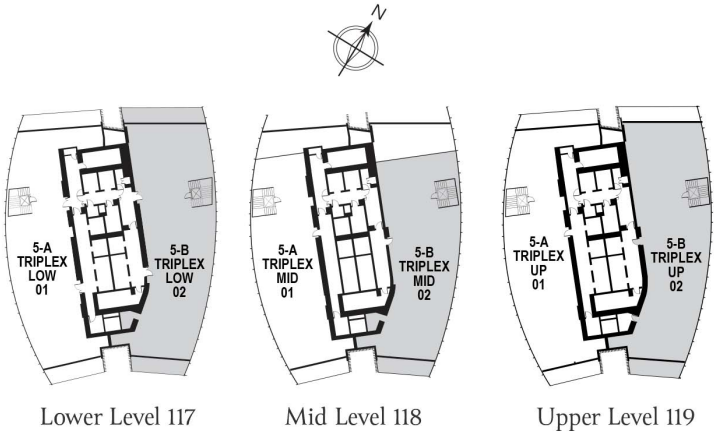


Upper Level 119



GOLF / CITY URBAN

Apartment Area	1,214.34 m ²	13,071.05 f ²
Balcony Area	95.82 m ²	1,031.40 f ²
Total Area	1,310.16 m ²	14,102.44 f ²



Drawings are provided by our consultants. All dimensions, features and amenities are approximate at time of printing. Actual size may vary from stated area. Drawings not to scale E & OE. The developer reserves the right to make revisions to the floor plans and any features, materials and dimensions mentioned without further notice.

CONTACT INFORMATION

800 100 001

+971 4 368 3355

+971 58 126 2599

sales@select-group.ae

www.select-group.ae